



# INTERNATIONAL GEMOLOGICAL INSTITUTE

ELECTRONIC COPY



February 7, 2025

IGI Report Number LG681520000  
EMERALD CUT  
LABORATORY GROWN DIAMOND  
5.77 X 3.85 X 2.53 MM  
Carat Weight 0.55 CARAT  
Color Grade F  
Clarity Grade I.F.  
Polish EXCELLENT  
Symmetry EXCELLENT  
Fluorescence NONE  
Inscription(s) LG681520000

Comments: As Grown - No indication of post-growth treatment. This Laboratory Grown Diamond was created by High Pressure High Temperature (HPHT) growth process. Type II



February 7, 2025

IGI Report Number LG681520000  
EMERALD CUT  
LABORATORY GROWN DIAMOND  
5.77 X 3.85 X 2.53 MM  
Carat Weight 0.55 CARAT  
Color Grade F  
Clarity Grade I.F.  
Polish EXCELLENT  
Symmetry EXCELLENT  
Fluorescence NONE  
Inscription(s) LG681520000

Comments: As Grown - No indication of post-growth treatment. This Laboratory Grown Diamond was created by High Pressure High Temperature (HPHT) growth process. Type II

## LABORATORY GROWN DIAMOND REPORT

February 7, 2025  
IGI Report Number LG681520000  
Description LABORATORY GROWN DIAMOND  
Shape and Cutting Style EMERALD CUT  
Measurements 5.77 X 3.85 X 2.53 MM

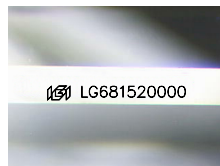
### GRADING RESULTS

Carat Weight 0.55 CARAT  
Color Grade F  
Clarity Grade INTERNALLY FLAWLESS

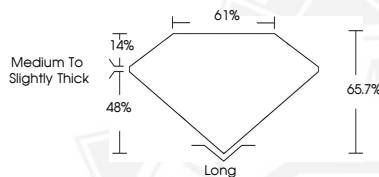
### ADDITIONAL GRADING INFORMATION

Polish EXCELLENT  
Symmetry EXCELLENT  
Fluorescence NONE  
Inscription(s) LG681520000

Comments: As Grown - No indication of post-growth treatment. This Laboratory Grown Diamond was created by High Pressure High Temperature (HPHT) growth process. Type II



Sample Image Used



THIS DOCUMENT WAS PRODUCED WITH THE FOLLOWING SECURITY MEASURES: SPECIAL DOCUMENT PAPER, INK SCREENS, WATERMARK, BACKGROUND DESIGNS, HOLOGRAM AND OTHER SECURITY FEATURES NOT LISTED AND DO EXCEED DOCUMENT SECURITY INDUSTRY GUIDELINES.

For terms & conditions and to verify this report, please visit [www.igi.org](http://www.igi.org)