



ELECTRONIC COPY

LABORATORY GROWN DIAMOND REPORT

February 7, 2025	
IGI Report Number	LG681547695
Description	LABORATORY GROWN DIAMOND
Shape and Cutting Style	SQUARE EMERALD CUT
Measurements	9.53 X 9.44 X 6.24 MM

GRADING RESULTS

Carat Weight	4.96 CARATS
Color Grade	E
Clarity Grade	VS 2

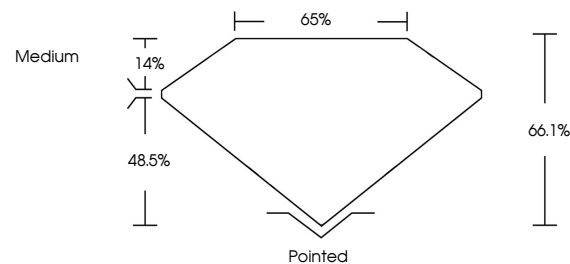
ADDITIONAL GRADING INFORMATION

Polish	EXCELLENT
Symmetry	EXCELLENT
Fluorescence	NONE
Inscription(s)	151 LG681547695

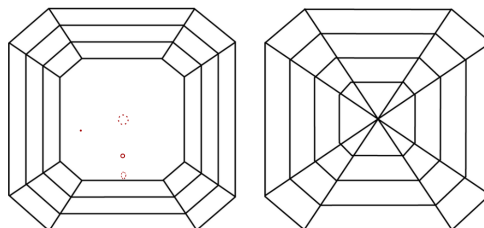
Comments: This Laboratory Grown Diamond was created by Chemical Vapor Deposition (CVD) growth process.
Type IIa

LG681547695
Report verification at lgi.org

PROPORTIONS

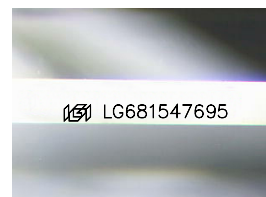


CLARITY CHARACTERISTICS



KEY TO SYMBOLS

Red symbols indicate internal characteristics.
Green symbols indicate external characteristics.



Sample Image Used

COLOR

D E F G H I J Faint Very Light Light

CLARITY

IF	VS ¹⁻²	VS ¹⁻²	SI ¹⁻²	I ¹⁻³
Internally Flawless	Very Very Slightly Included	Very Slightly Included	Slightly Included	Included

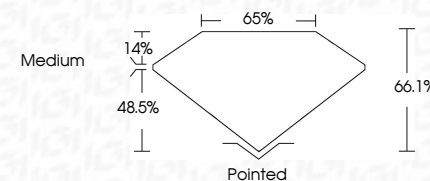
LABORATORY GROWN DIAMOND REPORT



February 7, 2025	
IGI Report Number	LG681547695
Description	LABORATORY GROWN DIAMOND
Shape and Cutting Style	SQUARE EMERALD CUT
Measurements	9.53 X 9.44 X 6.24 MM

GRADING RESULTS

Carat Weight	4.96 CARATS
Color Grade	E
Clarity Grade	VS 2



ADDITIONAL GRADING INFORMATION

Polish	EXCELLENT
Symmetry	EXCELLENT
Fluorescence	NONE
Inscription(s)	 LG681547695
Comments: This Laboratory Grown Diamond was created by Chemical Vapor Deposition (CVD) growth process.	
Type IIa	



© IGI 2020, International Gemological Institute

FD - 10 20



THIS DOCUMENT WAS PRODUCED WITH THE FOLLOWING SECURITY MEASURES: SPECIAL DOCUMENT PAPER, INK SCREENS, WATERMARK, BACKGROUND DESIGNS, HOLOGRAM AND OTHER SECURITY FEATURES NOT LISTED AND DO EXCEED DOCUMENT SECURITY INDUSTRY GUIDELINES

www.igi.org

February 7, 2025	GI Report No. LG481547/695
SQUARE EMERALD CUT	4.3% CARATS
53.53 X 9.41 X 6.54 MM	E
Carat Weight	VS 2
Color Grade	66.1%
Clarity Grade	65%
Depth	Medium
Table	Pointed
Grade	EXCELLENT
	EXCELLENT
	NONE
	691 LG481547/695

Comments: Laboratory Growth Diamond was created by Chemical Vapor Deposition (CVD) growth process.

Type IIa