



ELECTRONIC COPY

LABORATORY GROWN DIAMOND REPORT

February 8, 2025	
IGI Report Number	LG681551763
Description	LABORATORY GROWN DIAMOND
Shape and Cutting Style	PRINCESS CUT
Measurements	7.55 X 7.41 X 5.28 MM

GRADING RESULTS

Carat Weight	2.56 CARATS
Color Grade	G
Clarity Grade	VS2

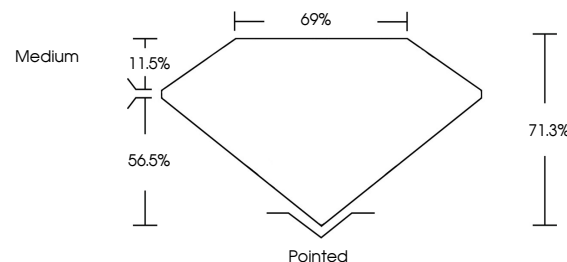
ADDITIONAL GRADING INFORMATION

Polish	EXCELLENT
Symmetry	EXCELLENT
Fluorescence	NONE
Inscription(s)	151 LG681551763

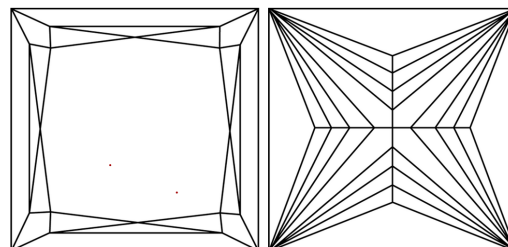
Comments: This Laboratory Grown Diamond was created by Chemical Vapor Deposition (CVD) growth process.
Type IIa

LG681551763
Report verification at lgi.org

PROPORTIONS

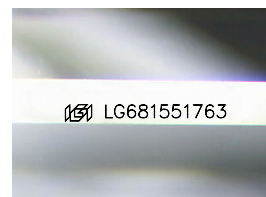


CLARITY CHARACTERISTICS



KEY TO SYMBOLS

Red symbols indicate internal characteristics.
Green symbols indicate external characteristics.



Sample Image Used

COLOR

D E F G H I J Faint Very Light Light

CLARITY

IF	VS ¹⁻²	VS ¹⁻²	SI ¹⁻²	I ¹⁻³
Internally Flawless	Very Very Slightly Included	Very Slightly Included	Slightly Included	Included

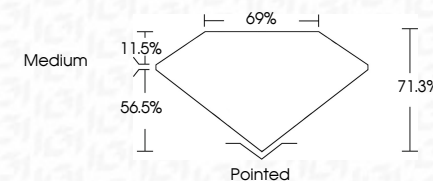
LABORATORY GROWN DIAMOND REPORT



February 8, 2025	
IGI Report Number	LG681551763
Description	LABORATORY GROWN DIAMOND
Shape and Cutting Style	PRINCESS CUT
Measurements	7.55 X 7.41 X 5.28 MM

GRADING RESULTS

Carat Weight	2.56 CARATS
Color Grade	G
Clarity Grade	VVS 2



ADDITIONAL GRADING INFORMATION

Polish	EXCELLENT
Symmetry	EXCELLENT
Fluorescence	NONE
Inscription(s)	 LG681551763
<p>Comments: This Laboratory Grown Diamond was created by Chemical Vapor Deposition (CVD) growth process.</p> <p>Type IIa</p>	



www.igi.org

© IGI 2020, International Gemological Institute

FD - 10 20



THIS DOCUMENT WAS PRODUCED WITH THE FOLLOWING SECURITY MEASURES: SPECIAL DOCUMENT PAPER, INK SCREENS, WATERMARK, BACKGROUND DESIGNS, HOLOGRAM AND OTHER SECURITY FEATURES NOT LISTED AND DO EXCEED DOCUMENT SECURITY INDUSTRY GUIDELINE

February 8, 2025
 IGI Report No LG681551763
 PRINCESS CITT

2.56 CARATS	VS 2	Polished	EXCELLENT
Color Grade	71.3%	Polish	EXCELLENT
Clarity Grade	69%	Symmetry	NONE
Depth	Medium	Fluorescence	None (Faint Blue)
Table			
Girdle			
Culet			

Comments:
This Laboratory Grown Diamond was created by Chemical Vapor Deposition (CVD) growth process.