



**ELECTRONIC COPY**

LG681558827  
Report verification at igi.org



February 19, 2025

IGI Report Number **LG681558827**

Description **LABORATORY GROWN DIAMOND**

Shape and Cutting Style **CUT CORNERED  
RECTANGULAR MODIFIED  
BRILLIANT**

Measurements **11.65 X 8.31 X 5.69 MM**

**GRADING RESULTS**

Carat Weight **5.10 CARATS**

Color Grade **FANCY VIVID YELLOW**

Clarity Grade **VS 1**

February 19, 2025

IGI Report Number **LG681558827**

Description **LABORATORY GROWN DIAMOND**

Shape and Cutting Style **CUT CORNERED RECTANGULAR  
MODIFIED BRILLIANT**

Measurements **11.65 X 8.31 X 5.69 MM**

**GRADING RESULTS**

Carat Weight **5.10 CARATS**

Color Grade **FANCY VIVID YELLOW**

Clarity Grade **VS 1**

**ADDITIONAL GRADING INFORMATION**

Polish **EXCELLENT**

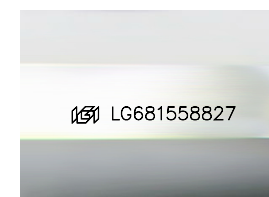
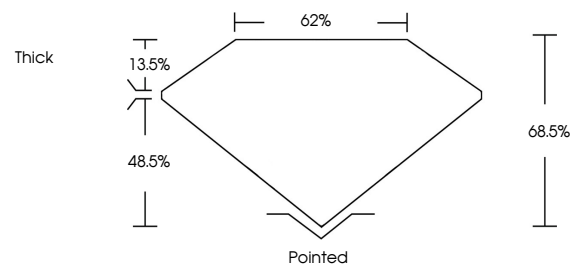
Symmetry **EXCELLENT**

Fluorescence **NONE**

Inscription(s) **IGI LG681558827**

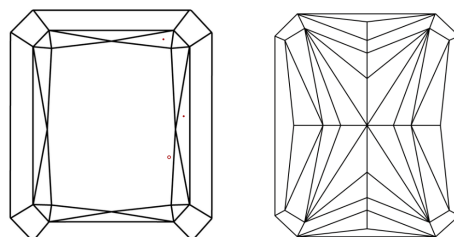
Comments: This Laboratory Grown Diamond was created by Chemical Vapor Deposition (CVD) growth process.

**PROPORTIONS**



Sample Image Used

**CLARITY CHARACTERISTICS**



**KEY TO SYMBOLS**

Red symbols indicate internal characteristics.  
Green symbols indicate external characteristics.

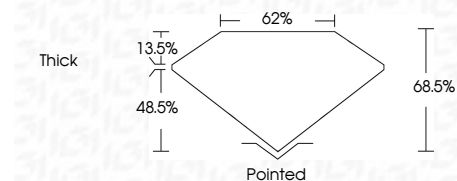
**COLOR**

D E F G H I J Faint Very Light Light

**CLARITY**

IF WS<sup>1-2</sup> VS<sup>1-2</sup> SI<sup>1-2</sup> I<sup>1-3</sup>

Internally Flawless Very Very Slightly Included Very Slightly Included Slightly Included Included



**ADDITIONAL GRADING INFORMATION**

Polish **EXCELLENT**

Symmetry **EXCELLENT**

Fluorescence **NONE**

Inscription(s) **IGI LG681558827**

Comments: This Laboratory Grown Diamond was created by Chemical Vapor Deposition (CVD) growth process.



**IGI**



February 19, 2025  
IGI Report No LG681558827  
CUT CORNERED RECT. MODIFIED BRILLIANT

11.65 X 8.31 X 5.69 MM  
5.10 CARATS  
FANCY VIVID YELLOW  
VS 1  
68.5%  
62%  
Thick

Pointed  
EXCELLENT  
EXCELLENT  
NONE  
IGI LG681558827

Comments: This Laboratory Grown Diamond was created by Chemical Vapor Deposition (CVD) growth process.