



INTERNATIONAL GEMOLOGICAL INSTITUTE

ELECTRONIC COPY



February 12, 2025

IGI Report Number LG681587118
ROUND BRILLIANT
LABORATORY GROWN DIAMOND
4.46 - 4.51 X 2.75 MM

Carat Weight 0.34 CARAT
Color Grade D
Clarity Grade SI 1
Cut Grade IDEAL
Polish EXCELLENT
Symmetry EXCELLENT
Fluorescence NONE
Inscription(s) IGI LG681587118

Comments: HEARTS & ARROWS This Laboratory Grown Diamond was created by Chemical Vapor Deposition (CVD) growth process. Type IIa

LABORATORY GROWN DIAMOND REPORT

February 12, 2025

IGI Report Number

LG681587118

Description

LABORATORY GROWN DIAMOND

Shape and Cutting Style

ROUND BRILLIANT

Measurements

4.46 - 4.51 X 2.75 MM

GRADING RESULTS

Carat Weight

0.34 CARAT

Color Grade

D

Clarity Grade

SI 1

Cut Grade

IDEAL

ADDITIONAL GRADING INFORMATION

Polish

EXCELLENT

Symmetry

EXCELLENT

Fluorescence

NONE

Inscription(s)

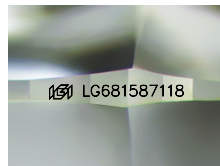
IGI LG681587118

Comments: HEARTS & ARROWS

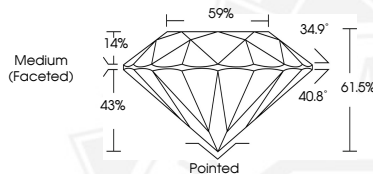
This Laboratory Grown Diamond was created by Chemical Vapor

Deposition (CVD) growth process.

Type IIa



Sample Image Used



HEARTS & ARROWS



February 12, 2025

IGI Report Number LG681587118
ROUND BRILLIANT
LABORATORY GROWN DIAMOND
4.46 - 4.51 X 2.75 MM

Carat Weight 0.34 CARAT
Color Grade D
Clarity Grade SI 1
Cut Grade IDEAL
Polish EXCELLENT
Symmetry EXCELLENT
Fluorescence NONE
Inscription(s) IGI LG681587118

Comments: HEARTS & ARROWS This Laboratory Grown Diamond was created by Chemical Vapor Deposition (CVD) growth process. Type IIa



THIS DOCUMENT WAS PRODUCED WITH THE FOLLOWING SECURITY MEASURES: SPECIAL DOCUMENT PAPER, INK SCREENS, WATERMARK, BACKGROUND DESIGNS, HOLOGRAM AND OTHER SECURITY FEATURES NOT LISTED AND DO EXCEED DOCUMENT SECURITY INDUSTRY GUIDELINES.

For terms & conditions and to verify this report, please visit www.igi.org