



**ELECTRONIC COPY**

**LABORATORY GROWN DIAMOND REPORT**

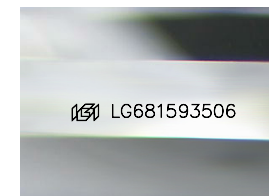
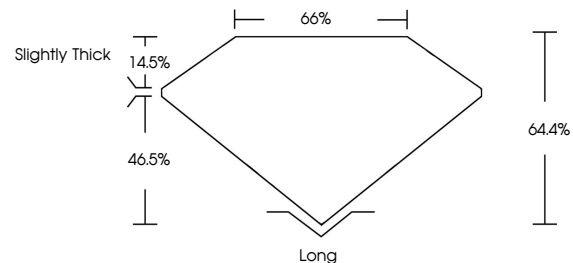
February 22, 2025  
 IGI Report Number **LG681593506**  
 Description **LABORATORY GROWN DIAMOND**  
 Shape and Cutting Style **EMERALD CUT**  
 Measurements **10.87 X 7.30 X 4.70 MM**  
**GRADING RESULTS**  
 Carat Weight **3.79 CARATS**  
 Color Grade **FANCY VIVID PINK**  
 Clarity Grade **VS 2**

**ADDITIONAL GRADING INFORMATION**

Polish **VERY GOOD**  
 Symmetry **EXCELLENT**  
 Fluorescence **SLIGHT**  
 Inscription(s) **LG681593506**

Comments: This Laboratory Grown Diamond was created by Chemical Vapor Deposition (CVD) growth process. Indications of post-growth treatment.

**PROPORTIONS**



Sample Image Used

**COLOR**

D E F G H I J Faint Very Light Light

**CLARITY**

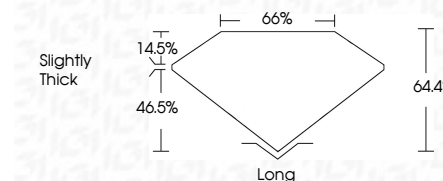
IF	VS <sup>1-2</sup>	VS <sup>1-2</sup>	SI <sup>1-2</sup>	I <sup>1-3</sup>
Internally Flawless	Very Very Slightly Included	Very Slightly Included	Slightly Included	Included



February 22, 2025  
 IGI Report Number **LG681593506**  
 Description **LABORATORY GROWN DIAMOND**  
 Shape and Cutting Style **EMERALD CUT**  
 Measurements **10.87 X 7.30 X 4.70 MM**  
**GRADING RESULTS**  
 Carat Weight **3.79 CARATS**  
 Color Grade **FANCY VIVID PINK**  
 Clarity Grade **VS 2**

**ADDITIONAL GRADING INFORMATION**

Polish **VERY GOOD**  
 Symmetry **EXCELLENT**  
 Fluorescence **SLIGHT**  
 Inscription(s) **LG681593506**  
 Comments: This Laboratory Grown Diamond was created by Chemical Vapor Deposition (CVD) growth process. Indications of post-growth treatment.



February 22, 2025  
 IGI Report No **LG681593506**  
**EMERALD CUT**  
**3.79 CARATS**  
 Carat Weight **FANCY VIVID PINK**  
 Color Grade **VS 2**  
 Clarity Grade **64.4%**  
 Depth **65%**  
 Table **Slightly Thick**  
 Girdle  
 Culet  
 Polish **Long**  
 Symmetry **VERY GOOD**  
 Fluorescence **EXCELLENT**  
 Inscription(s) **SLIGHT**  
**LG681593506**  
 Comments: This Laboratory Grown Diamond was created by Chemical Vapor Deposition (CVD) growth process. Indications of post-growth treatment.