



ELECTRONIC COPY

LABORATORY GROWN DIAMOND REPORT

February 10, 2025	
IGI Report Number	LG681598691
Description	LABORATORY GROWN DIAMOND
Shape and Cutting Style	ROUND BRILLIANT
Measurements	7.26 - 7.32 X 4.41 MM

GRADING RESULTS

Carat Weight	1.44 CARAT
Color Grade	F
Clarity Grade	VVS 1
Cut Grade	IDEAL

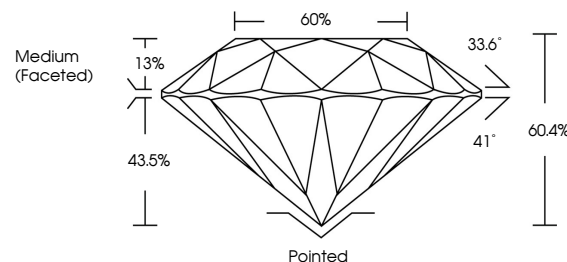
ADDITIONAL GRADING INFORMATION

Polish	EXCELLENT
Symmetry	EXCELLENT
Fluorescence	NONE
Inscription(s)	 LG681598691

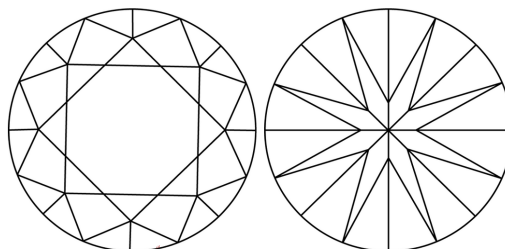
Comments: This Laboratory Grown Diamond was created by Chemical Vapor Deposition (CVD) growth process.
Type IIa

LG681598691
Report verification at [igi.org](https://www.igi.org)

PROPORTIONS

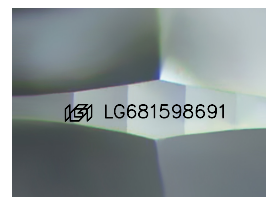


CLARITY CHARACTERISTICS



KEY TO SYMBOLS

Red symbols indicate internal characteristics.
Green symbols indicate external characteristics.



Sample Image Used

COLOR

D E F G H I J Faint Very Light Light

CLARITY

IF WS¹⁻² VS¹⁻² SI¹⁻² 1-3

Internally Flawless	Very Very Slightly Included	Very Slightly Included	Slightly Included	Included
------------------------	--------------------------------	---------------------------	----------------------	----------

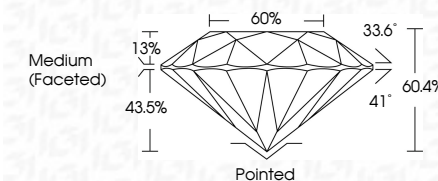
LABORATORY GROWN DIAMOND REPORT



February 10, 2025	
IGI Report Number	LG681598691
Description	LABORATORY GROWN DIAMOND
Shape and Cutting Style	ROUND BRILLIANT
Measurements	7.26 - 7.32 X 4.41 MM

GRADING RESULTS

Carat Weight	1.44 CARAT
Color Grade	F
Clarity Grade	VVS 1
Cut Grade	IDEAL



ADDITIONAL GRADING INFORMATION

Polish	EXCELLENT
Symmetry	EXCELLENT
Fluorescence	NONE
Inscription(s)	 LG681598691
Comments: This Laboratory Grown Diamond was created by Chemical Vapor Deposition (CVD) growth process.	
Type IIa	



© IGI 2020, International Gemological Institute

FD - 10 20



THIS DOCUMENT WAS PRODUCED WITH THE FOLLOWING SECURITY MEASURES: SPECIAL DOCUMENT PAPER, INK SCREENS, WATERMARK, BACKGROUND DESIGNS, HOLOGRAM AND OTHER SECURITY FEATURES NOT LISTED AND DO EXCEED DOCUMENT SECURITY INDUSTRY GUIDELINES

www.igi.org

February 10, 2025
 IGI Report No LG681598691
 ROUND BRILLIANT

ROUND BRILLIANT	7.26 - 7.32 X 4.41 MM	1.44 CARAT
	Carat Weight	F
	Color Grade	
	Clarity Grade	VVS 1
	Cut Grade	IDEAL
	Depth	60.4%
	Table	60%
	Girdle	Medium (Excellent)

	Pointed	Pointed
Culet	EXCELLENT	EXCELLENT
Polish	EXCELLENT	EXCELLENT
Symmetry	EXCELLENT	EXCELLENT
Fluorescence	NONE	NONE

Comments:
This Laboratory Grown Diamond was created by Chemical Vapor Deposition (CVD) growth process.