



**ELECTRONIC COPY**

LG681599186  
Report verification at igi.org



February 10, 2025

IGI Report Number **LG681599186**

Description **LABORATORY GROWN DIAMOND**

Shape and Cutting Style **ROUND BRILLIANT**

Measurements **9.00 - 9.03 X 5.62 MM**

**GRADING RESULTS**

Carat Weight **2.80 CARATS**

Color Grade **E**

Clarity Grade **VS 2**

Cut Grade **IDEAL**

February 10, 2025

IGI Report Number **LG681599186**

Description **LABORATORY GROWN DIAMOND**

Shape and Cutting Style **ROUND BRILLIANT**

Measurements **9.00 - 9.03 X 5.62 MM**

**GRADING RESULTS**

Carat Weight **2.80 CARATS**

Color Grade **E**

Clarity Grade **VS 2**

Cut Grade **IDEAL**

**ADDITIONAL GRADING INFORMATION**

Polish **EXCELLENT**

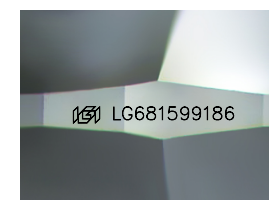
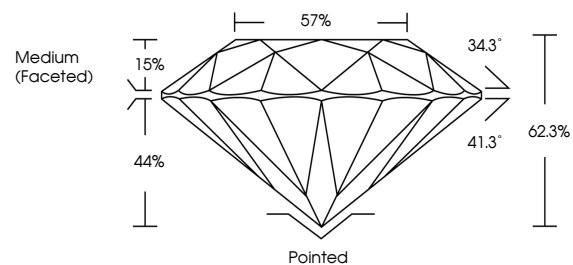
Symmetry **EXCELLENT**

Fluorescence **NONE**

Inscription(s) **LG681599186**

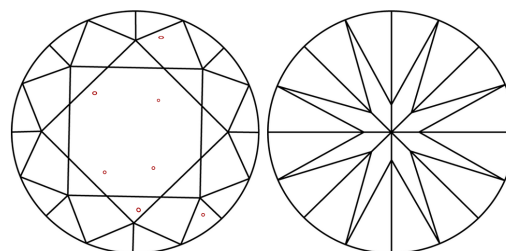
Comments: HEARTS & ARROWS  
This Laboratory Grown Diamond was created by  
Chemical Vapor Deposition (CVD) growth process.  
Type IIa

**PROPORTIONS**



Sample Image Used

**CLARITY CHARACTERISTICS**



**KEY TO SYMBOLS**

Red symbols indicate internal characteristics.  
Green symbols indicate external characteristics.



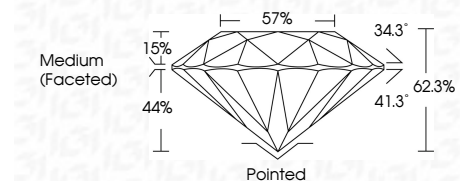
**COLOR**

D E F G H I J Faint Very Light Light

**CLARITY**

IF VS<sup>1-2</sup> VS<sup>1-2</sup> SI<sup>1-2</sup> I<sup>1-3</sup>

Internally Flawless Very Very Slightly Included Very Slightly Included Slightly Included Included



**ADDITIONAL GRADING INFORMATION**

Polish **EXCELLENT**

Symmetry **EXCELLENT**

Fluorescence **NONE**

Inscription(s) **LG681599186**

Comments: HEARTS & ARROWS  
This Laboratory Grown Diamond was created by  
Chemical Vapor Deposition (CVD) growth process.  
Type IIa



February 10, 2025	IGI Report No LG681599186	2.80 CARATS	E	VS 2	IDEAL	62.3%	57%	Medium (Faceted)	Pointed	EXCELLENT	EXCELLENT	NONE	LG681599186
ROUND BRILLIANT	9.00 - 9.03 X 5.62 MM	Color Grade	Clarity Grade	Cut Grade	Depth	Table	Girdle		Culet	Polish	Symmetry	Fluorescence	Inscription(s)

Comments: HEARTS & ARROWS  
This Laboratory Grown Diamond was created by Chemical Vapor Deposition (CVD) growth process.  
Type IIa