



INTERNATIONAL GEMOLOGICAL INSTITUTE

ELECTRONIC COPY

LABORATORY GROWN DIAMOND REPORT

February 17, 2025

IGI Report Number

LG683520237

Description

LABORATORY GROWN DIAMOND

Shape and Cutting Style

RADIANT CUT

Measurements

4.57 X 3.27 X 2.19 MM

GRADING RESULTS

Carat Weight

0.28 CARAT

Color Grade

E

Clarity Grade

VVS 2

ADDITIONAL GRADING INFORMATION

Polish

VERY GOOD

Symmetry

VERY GOOD

Fluorescence

NONE

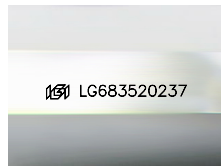
Inscription(s)

IGI LG683520237

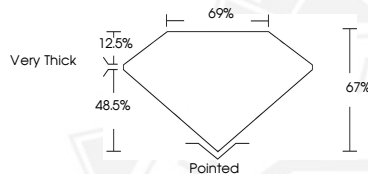
Comments: As Grown - No indication of post-growth treatment.

This Laboratory Grown Diamond was created by High Pressure High Temperature (HPHT) growth process.

Type II



Sample Image Used



February 17, 2025

IGI Report Number LG683520237

RADIANT CUT

LABORATORY GROWN DIAMOND

4.57 X 3.27 X 2.19 MM

Carat Weight 0.28 CARAT

Color Grade E

Clarity Grade VVS 2

Polish VERY GOOD

Symmetry VERY GOOD

Fluorescence NONE

Inscription(s) IGI LG683520237

Comments: As Grown - No indication of post-growth treatment. This Laboratory Grown Diamond was created by High Pressure High Temperature (HPHT) growth process. Type II



February 17, 2025

IGI Report Number LG683520237

RADIANT CUT

LABORATORY GROWN DIAMOND

4.57 X 3.27 X 2.19 MM

Carat Weight 0.28 CARAT

Color Grade E

Clarity Grade VVS 2

Polish VERY GOOD

Symmetry VERY GOOD

Fluorescence NONE

Inscription(s) IGI LG683520237

Comments: As Grown - No indication of post-growth treatment. This Laboratory Grown Diamond was created by High Pressure High Temperature (HPHT) growth process. Type II



THIS DOCUMENT WAS PRODUCED WITH THE FOLLOWING SECURITY MEASURES: SPECIAL DOCUMENT PAPER, INK SCREENS, WATERMARK, BACKGROUND DESIGNS, HOLOGRAM AND OTHER SECURITY FEATURES NOT LISTED AND DO EXCEED DOCUMENT SECURITY INDUSTRY GUIDELINES.

For terms & conditions and to verify this report, please visit www.igi.org