



ELECTRONIC COPY

LG683543976
Report verification at igi.org



March 3, 2025

IGI Report Number **LG683543976**

Description **LABORATORY GROWN DIAMOND**

Shape and Cutting Style **PRINCESS CUT**

Measurements **5.80 X 5.79 X 4.15 MM**

GRADING RESULTS

Carat Weight **1.24 CARAT**

Color Grade **E**

Clarity Grade **VVS 2**

March 3, 2025
IGI Report Number **LG683543976**
Description **LABORATORY GROWN DIAMOND**
Shape and Cutting Style **PRINCESS CUT**
Measurements **5.80 X 5.79 X 4.15 MM**

GRADING RESULTS

Carat Weight **1.24 CARAT**

Color Grade **E**

Clarity Grade **VVS 2**

ADDITIONAL GRADING INFORMATION

Polish **EXCELLENT**

Symmetry **EXCELLENT**

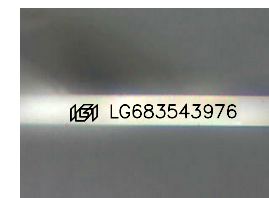
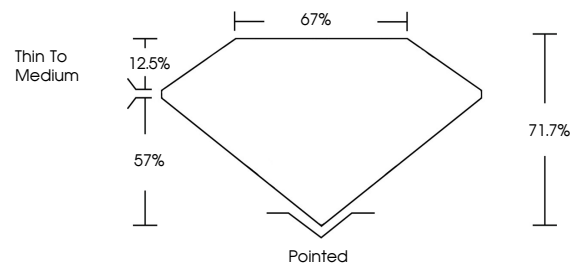
Fluorescence **NONE**

Inscription(s) **LG683543976**

Comments: As Grown - No indication of post-growth treatment.

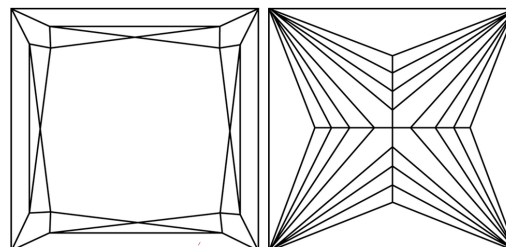
This Laboratory Grown Diamond was created by High Pressure High Temperature (HPHT) growth process. Type II

PROPORTIONS



Sample Image Used

CLARITY CHARACTERISTICS



KEY TO SYMBOLS

Red symbols indicate internal characteristics.
Green symbols indicate external characteristics.

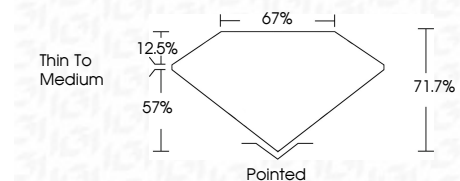
COLOR

D E F G H I J Faint Very Light Light

CLARITY

IF WS¹⁻² VS¹⁻² SI¹⁻² I¹⁻³

Internally Flawless Very Very Slightly Included Very Slightly Included Slightly Included Included



ADDITIONAL GRADING INFORMATION

Polish **EXCELLENT**

Symmetry **EXCELLENT**

Fluorescence **NONE**

Inscription(s) **LG683543976**

Comments: As Grown - No indication of post-growth treatment.

This Laboratory Grown Diamond was created by High Pressure High Temperature (HPHT) growth process. Type II



IGI



March 3, 2025
IGI Report No. **LG683543976**
PRINCESS CUT
1.24 CARAT
E
5.80 X 5.79 X 4.15 MM
VVS 2
71.7%
67%
Thin To Medium
Pointed
EXCELLENT
EXCELLENT
NONE
IGI LG683543976

Comments: As Grown - No indication of post-growth treatment.
This Laboratory Grown Diamond was created by High Pressure High Temperature (HPHT) growth process. Type II