



**ELECTRONIC COPY**

LG683581788  
Report verification at igi.org



February 27, 2025

IGI Report Number **LG683581788**

Description **LABORATORY GROWN DIAMOND**

Shape and Cutting Style **ROUND BRILLIANT**

Measurements **14.03 - 14.10 X 8.48 MM**

**GRADING RESULTS**

Carat Weight **10.28 CARATS**

Color Grade **FANCY VIVID BLUE**

Clarity Grade **VS 2**

Cut Grade **IDEAL**

February 27, 2025

IGI Report Number **LG683581788**

Description **LABORATORY GROWN DIAMOND**

Shape and Cutting Style **ROUND BRILLIANT**

Measurements **14.03 - 14.10 X 8.48 MM**

**GRADING RESULTS**

Carat Weight **10.28 CARATS**

Color Grade **FANCY VIVID BLUE**

Clarity Grade **VS 2**

Cut Grade **IDEAL**

**ADDITIONAL GRADING INFORMATION**

Polish **EXCELLENT**

Symmetry **EXCELLENT**

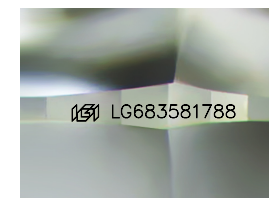
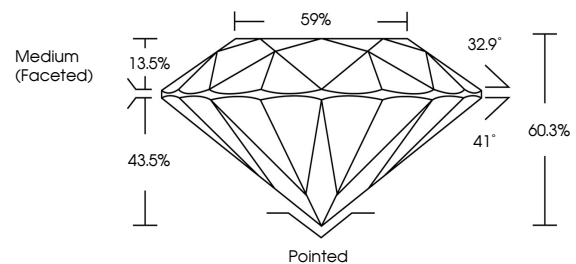
Fluorescence **NONE**

Inscription(s) **LG683581788**

Comments: This Laboratory Grown Diamond was created by Chemical Vapor Deposition (CVD) growth process.

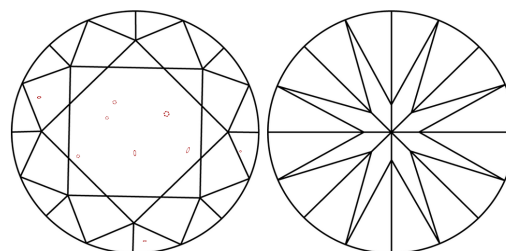
Indications of post-growth treatment.

**PROPORTIONS**



Sample Image Used

**CLARITY CHARACTERISTICS**



**KEY TO SYMBOLS**

Red symbols indicate internal characteristics.  
Green symbols indicate external characteristics.

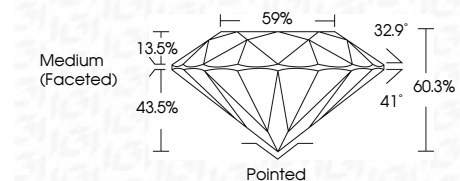
**COLOR**

D E F G H I J Faint Very Light Light

**CLARITY**

IF WS<sup>1-2</sup> VS<sup>1-2</sup> SI<sup>1-2</sup> I<sup>1-3</sup>

Internally Flawless Very Very Slightly Included Very Slightly Included Slightly Included Included



**ADDITIONAL GRADING INFORMATION**

Polish **EXCELLENT**

Symmetry **EXCELLENT**

Fluorescence **NONE**

Inscription(s) **LG683581788**

Comments: This Laboratory Grown Diamond was created by Chemical Vapor Deposition (CVD) growth process.

Indications of post-growth treatment.



**IGI**



February 27, 2025	10.28 CARATS	Pointed
IGI Report No LG683581788	FANCY VIVID BLUE	EXCELLENT
ROUND BRILLIANT	VS 2	EXCELLENT
14.03 - 14.10 X 8.48 MM	IDEAL	NONE
Carat Weight	60.3%	NONE
Color Grade	59%	Medium (Faceted)
Clarity Grade		
Cut Grade		
Depth		
Table		
Girdle		
Polish		
Symmetry		
Fluorescence		
Inscription(s)		
Comments: This Laboratory Grown Diamond was created by Chemical Vapor Deposition (CVD) growth process. Indications of post-growth treatment.		