



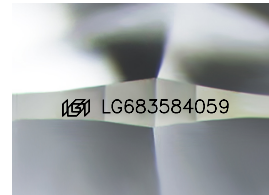
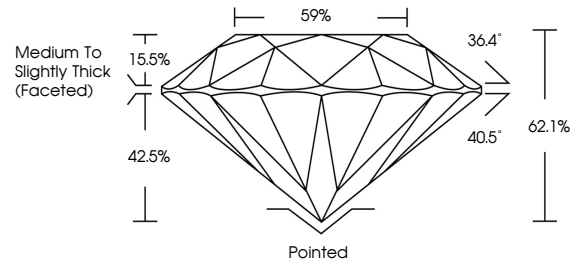
**INTERNATIONAL
GEMOLOGICAL
INSTITUTE**

ELECTRONIC COPY

LABORATORY GROWN DIAMOND REPORT

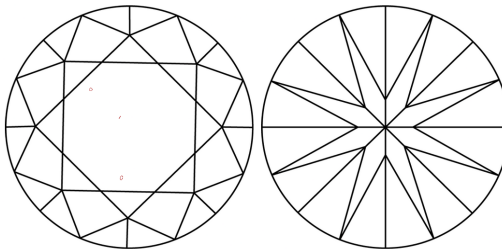
LG683584059
Report verification at igi.org

PROPORTIONS



Sample Image Used

CLARITY CHARACTERISTICS



KEY TO SYMBOLS

Red symbols indicate internal characteristics.
Green symbols indicate external characteristics.

COLOR

D E F G H I J Faint Very Light Light

CLARITY

IF WS¹⁻² VS¹⁻² SI¹⁻² I¹⁻³

Internally Flawless	Very Very Slightly Included	Very Slightly Included	Slightly Included	Included
------------------------	--------------------------------	---------------------------	----------------------	----------

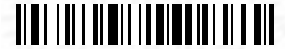


© IGI 2020, International Gemological Institute

FD - 10 20

www.igi.org

LABORATORY GROWN DIAMOND REPORT



March 25, 2025

IGI Report Number **LG683584059**

Description	LABORATORY GROWN DIAMOND
-------------	--------------------------

Shape and Cutting Style **ROUND BRILLIANT**

Measurements	14.87 - 14.94 X 9.27 MM
--------------	-------------------------

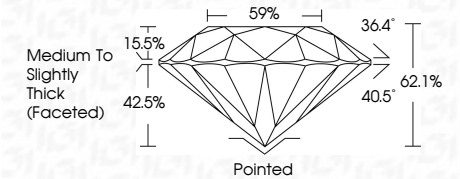
GRADING RESULTS

Carat Weight **13.02 CARATS**

Color Grade **E**

Clarity Grade **VS 1**

Cut Grade **EXCELLENT**



ADDITIONAL GRADING INFORMATION

Polish **EXCELLENT**Symmetry **EXCELLENT**Fluorescence **NONE**Inscription(s) **151** LG683584059

Comments: This Laboratory Grown Diamond was created by Chemical Vapor Deposition (CVD) growth process.
Type IIa



IGI

March 25, 2025	IGI Report No LG683594059	ROUND BRILLIANT	14.87 - 14.94 X 9.27 MM	13.02 CARATS	
	Carat Weight	Color Grade	Clarity Grade	Vs 1	EXCELLENT
			Cut Grade	62 1%	69%
	Depth	Table	Girdle	Medium to Slightly Thick (Faceted)	Polished
					EXCELLENT
	Symmetry	Fluorescence	Inclusions	NONE	lgf LG683594059
Comments: This Laboratory Grown Diamond was created by Chemical Vapor Deposition (CVD) growth process. Type IId					