



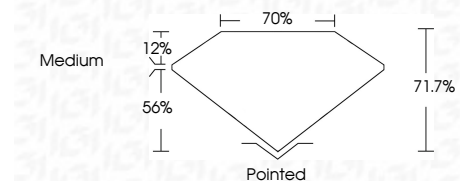
**ELECTRONIC COPY**

LG683592433  
Report verification at igi.org



February 18, 2025  
IGI Report Number **LG683592433**  
Description **LABORATORY GROWN DIAMOND**  
Shape and Cutting Style **PRINCESS CUT**  
Measurements **8.16 X 8.14 X 5.84 MM**

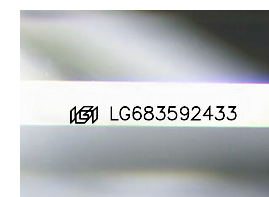
**GRADING RESULTS**  
Carat Weight **3.50 CARATS**  
Color Grade **E**  
Clarity Grade **VS 2**



**ADDITIONAL GRADING INFORMATION**  
Polish **EXCELLENT**  
Symmetry **EXCELLENT**  
Fluorescence **NONE**  
Inscription(s) **IGI LG683592433**  
Comments: This Laboratory Grown Diamond was created by Chemical Vapor Deposition (CVD) growth process. Type IIa

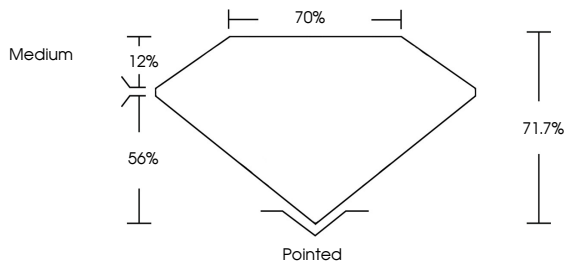


February 18, 2025  
IGI Report No. LG683592433  
**PRINCESS CUT**  
**3.50 CARATS**  
E  
8.16 X 8.14 X 5.84 MM  
Carat Weight  
Color Grade  
VS 2  
Clarity Grade  
71.7%  
Depth  
56%  
Table  
70%  
Girdle  
Medium  
Pointed  
EXCELLENT  
Culet  
Symmetry  
EXCELLENT  
Fluorescence  
NONE  
Inscription(s)  
IGI LG683592433  
Comments: This Laboratory Grown Diamond was created by Chemical Vapor Deposition (CVD) growth process. Type IIa

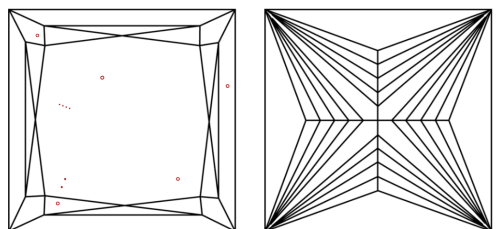


Sample Image Used

**PROPORTIONS**



**CLARITY CHARACTERISTICS**



**KEY TO SYMBOLS**  
Red symbols indicate internal characteristics.  
Green symbols indicate external characteristics.

**COLOR**

D	E	F	G	H	I	J	Faint	Very Light	Light
---	---	---	---	---	---	---	-------	------------	-------

**CLARITY**

IF	VS <sup>1-2</sup>	VS <sup>1-2</sup>	SI <sup>1-2</sup>	I <sup>1-3</sup>
Internally Flawless	Very Very Slightly Included	Very Slightly Included	Slightly Included	Included

