



**ELECTRONIC COPY**

LG685504204  
Report verification at igi.org



February 19, 2025

IGI Report Number **LG685504204**

Description **LABORATORY GROWN DIAMOND**

Shape and Cutting Style **ROUND BRILLIANT**

Measurements **6.64 - 6.67 X 4.09 MM**

**GRADING RESULTS**

Carat Weight **1.11 CARAT**

Color Grade **G**

Clarity Grade **VS 1**

Cut Grade **IDEAL**

February 19, 2025

IGI Report Number **LG685504204**

Description **LABORATORY GROWN DIAMOND**

Shape and Cutting Style **ROUND BRILLIANT**

Measurements **6.64 - 6.67 X 4.09 MM**

**GRADING RESULTS**

Carat Weight **1.11 CARAT**

Color Grade **G**

Clarity Grade **VS 1**

Cut Grade **IDEAL**

**ADDITIONAL GRADING INFORMATION**

Polish **EXCELLENT**

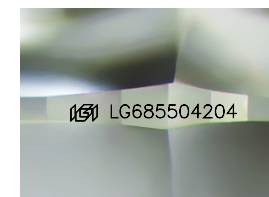
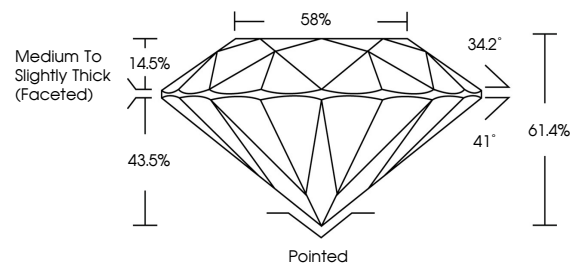
Symmetry **EXCELLENT**

Fluorescence **NONE**

Inscription(s) **LG685504204**

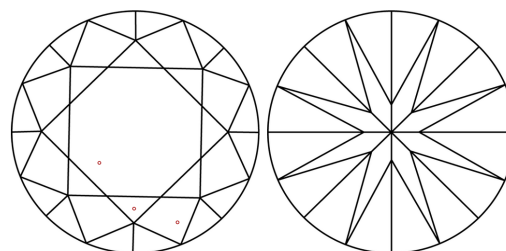
Comments: This Laboratory Grown Diamond was created by Chemical Vapor Deposition (CVD) growth process. Type IIa

**PROPORTIONS**



Sample Image Used

**CLARITY CHARACTERISTICS**



**KEY TO SYMBOLS**

Red symbols indicate internal characteristics.  
Green symbols indicate external characteristics.

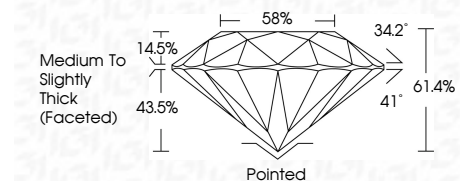
**COLOR**

D E F G H I J Faint Very Light Light

**CLARITY**

IF WS<sup>1-2</sup> VS<sup>1-2</sup> SI<sup>1-2</sup> I<sup>1-3</sup>

Internally Flawless Very Very Slightly Included Very Slightly Included Slightly Included Included



**ADDITIONAL GRADING INFORMATION**

Polish **EXCELLENT**

Symmetry **EXCELLENT**

Fluorescence **NONE**

Inscription(s) **LG685504204**

Comments: This Laboratory Grown Diamond was created by Chemical Vapor Deposition (CVD) growth process. Type IIa



**IGI**

|                   |                           |                 |                       |                |              |             |               |           |       |                                    |         |           |           |              |                |
|-------------------|---------------------------|-----------------|-----------------------|----------------|--------------|-------------|---------------|-----------|-------|------------------------------------|---------|-----------|-----------|--------------|----------------|
| February 19, 2025 | IGI Report No LG685504204 | ROUND BRILLIANT | 6.64 - 6.67 X 4.09 MM | 1.11 CARAT     | G            | VS 1        | IDEAL         | 61.4%     | 58%   | Medium To Slightly Thick (Faceted) | Pointed | EXCELLENT | EXCELLENT | NONE         | LG685504204    |
| Cutter            | Polish                    | Symmetry        | Fluorescence          | Inscription(s) | Carat Weight | Color Grade | Clarity Grade | Cut Grade | Depth | Table                              | Girdle  | Polish    | Symmetry  | Fluorescence | Inscription(s) |

Comments: This Laboratory Grown Diamond was created by Chemical Vapor Deposition (CVD) growth process. Type IIa