



ELECTRONIC COPY

LABORATORY GROWN DIAMOND REPORT

| | |
|-------------------------|--------------------------|
| February 18, 2025 | |
| IGI Report Number | LG685504389 |
| Description | LABORATORY GROWN DIAMOND |
| Shape and Cutting Style | SQUARE EMERALD CUT |
| Measurements | 8.79 X 8.72 X 5.80 MM |

GRADING RESULTS

| | |
|---------------|-------------|
| Carat Weight | 4.09 CARATS |
| Color Grade | F |
| Clarity Grade | VVS 2 |

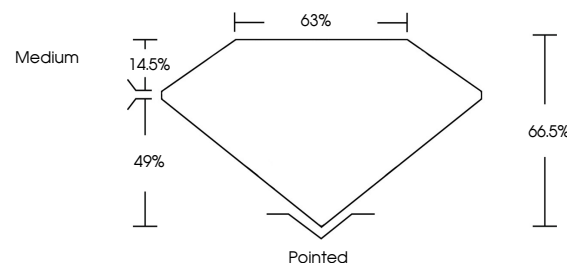
ADDITIONAL GRADING INFORMATION

| | |
|----------------|----------------|
| Polish | EXCELLENT |
| Symmetry | EXCELLENT |
| Fluorescence | NONE |
| Inscription(s) | 15 LG685504389 |

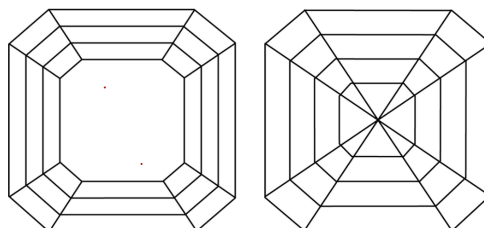
Comments: This Laboratory Grown Diamond was created by Chemical Vapor Deposition (CVD) growth process.
Type IIa

LG685504389
Report verification at igi.org

PROPORTIONS

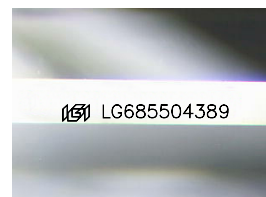


CLARITY CHARACTERISTICS



KEY TO SYMBOLS

Red symbols indicate internal characteristics.
Green symbols indicate external characteristics.



Sample Image Used

COLOR

D E F G H I J Faint Very Light Light

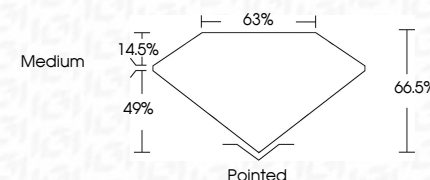
CLARITY

IF VS¹⁻² VS¹⁻² S¹⁻² |¹⁻³

| | | | | |
|------------------------|--------------------------------|---------------------------|----------------------|----------|
| Internally Flawless | Very Very Slightly Included | Very Slightly Included | Slightly Included | Included |
|------------------------|--------------------------------|---------------------------|----------------------|----------|



| | |
|-------------------------|--------------------------|
| February 18, 2025 | |
| IGI Report Number | LG685504389 |
| Description | LABORATORY GROWN DIAMOND |
| Shape and Cutting Style | SQUARE EMERALD CUT |
| Measurements | 8.79 X 8.72 X 5.80 MM |
| GRADING RESULTS | |
| Carat Weight | 4.09 CARATS |
| Color Grade | F |
| Clarity Grade | VVS 2 |



ADDITIONAL GRADING INFORMATION

| | |
|---|---|
| Polish | EXCELLENT |
| Symmetry | EXCELLENT |
| Fluorescence | NONE |
| Inscription(s) |  LG685504389 |
| <p>Comments: This Laboratory Grown Diamond was created by Chemical Vapor Deposition (CVD) growth process.</p> <p>Type IIa</p> | |



© IGI 2020, International Gemological Institute

FD - 10 20

www.igi.org

THIS DOCUMENT WAS PRODUCED WITH THE FOLLOWING SECURITY MEASURES: SPECIAL DOCUMENT PAPER, INK SCREENS, WATERMARK, BACKGROUND DESIGNS, HOLOGRAM AND OTHER SECURITY FEATURES NOT LISTED AND DO EXCEED DOCUMENT SECURITY INDUSTRY GUIDELINE

| | | | |
|-----------------------|-------------------------|-------------|-----------------|
| February 18, 2025 | GI Report No 1G68504389 | 4,09 CABATS | F |
| SQUARE EMERALD CUT | Carat Weight | VVS 2 | 66.6% |
| 7.79 X 5.72 X 5.80 MM | Color Grade | Medium | 63% |
| Depth | Clarity Grade | Polished | Excellent |
| Table | Polish | Excellent | None |
| Girdle | Symmetry | Excellent | None |
| | Fluorescence | | None |
| | | | See Certificate |

Comments:
This Laboratory Grown Diamond was
created by Chemical Vapor Deposition
(CVD) growth process.