



**ELECTRONIC COPY**

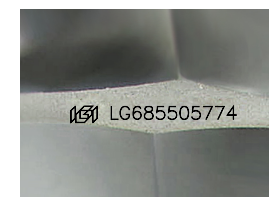
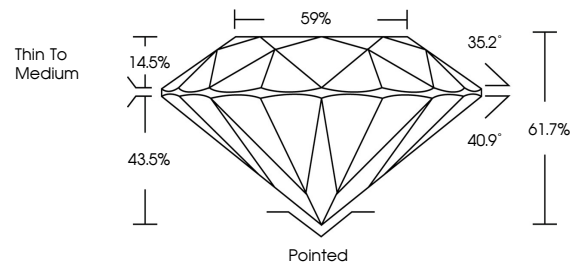
LG685505774  
Report verification at igi.org



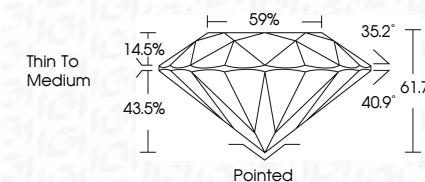
October 9, 2025  
IGI Report Number **LG685505774**  
Description **LABORATORY GROWN DIAMOND**  
Shape and Cutting Style **ROUND BRILLIANT**  
Measurements **6.26 - 6.28 X 3.87 MM**  
**GRADING RESULTS**  
Carat Weight **0.94 CARAT**  
Color Grade **D**  
Clarity Grade **VVS 1**  
Cut Grade **IDEAL**

October 9, 2025  
IGI Report Number **LG685505774**  
Description **LABORATORY GROWN DIAMOND**  
Shape and Cutting Style **ROUND BRILLIANT**  
Measurements **6.26 - 6.28 X 3.87 MM**  
**GRADING RESULTS**  
Carat Weight **0.94 CARAT**  
Color Grade **D**  
Clarity Grade **VVS 1**  
Cut Grade **IDEAL**

**PROPORTIONS**



Sample Image Used



**ADDITIONAL GRADING INFORMATION**  
Polish **EXCELLENT**  
Symmetry **EXCELLENT**  
Fluorescence **NONE**  
Inscription(s) **IGI LG685505774**

**ADDITIONAL GRADING INFORMATION**  
Polish **EXCELLENT**  
Symmetry **EXCELLENT**  
Fluorescence **NONE**  
Inscription(s) **IGI LG685505774**

**COLOR**

D E F G H I J Faint Very Light Light

**CLARITY**

FL	IF	VVS <sup>1-2</sup>	VS <sup>1-2</sup>	SI <sup>1-2</sup>	I <sup>1-3</sup>
Flawless	Internally Flawless	Very Very Slightly Included	Very Slightly Included	Slightly Included	Included



**IGI**



October 9, 2025  
IGI Report No **LG685505774**  
**ROUND BRILLIANT**  
6.26 - 6.28 X 3.87 MM  
0.94 CARAT  
Color Grade **D**  
Clarity Grade **VVS 1**  
Depth **61.7%**  
Table **59%**  
Girdle  
Thin To Medium  
Culet **Pointed**  
Polish **EXCELLENT**  
Symmetry **EXCELLENT**  
Fluorescence **NONE**  
Inscriptions(s) **IGI LG685505774**