



**ELECTRONIC COPY**

LG685505995  
Report verification at [igi.org](http://igi.org)



October 8, 2025

IGI Report Number **LG685505995**

Description **LABORATORY GROWN DIAMOND**

Shape and Cutting Style **ROUND BRILLIANT**

Measurements **7.78 - 7.79 X 4.82 MM**

**GRADING RESULTS**

Carat Weight **1.78 CARAT**

Color Grade **E**

Clarity Grade **VVS 2**

Cut Grade **IDEAL**

October 8, 2025

IGI Report Number **LG685505995**

Description **LABORATORY GROWN DIAMOND**

Shape and Cutting Style **ROUND BRILLIANT**

Measurements **7.78 - 7.79 X 4.82 MM**

**GRADING RESULTS**

Carat Weight **1.78 CARAT**

Color Grade **E**

Clarity Grade **VVS 2**

Cut Grade **IDEAL**

**ADDITIONAL GRADING INFORMATION**

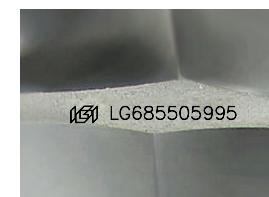
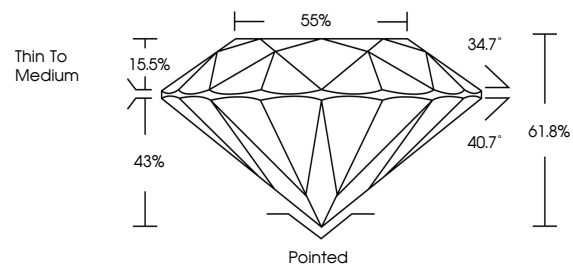
Polish **EXCELLENT**

Symmetry **EXCELLENT**

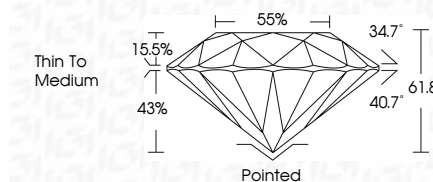
Fluorescence **NONE**

Inscription(s) **LG685505995**

**PROPORTIONS**



Sample Image Used



**COLOR**

D E F G H I J Faint Very Light Light

**CLARITY**

FL IF VVS<sup>1-2</sup> VS<sup>1-2</sup> SI<sup>1-2</sup> I<sup>1-3</sup>

Flawless Internally Flawless Very Very Slightly Included Very Slightly Included Slightly Included Included

**ADDITIONAL GRADING INFORMATION**

Polish **EXCELLENT**

Symmetry **EXCELLENT**

Fluorescence **NONE**

Inscription(s) **LG685505995**



**IGI**

October 8, 2025  
IGI Report No LG685505995  
**ROUND BRILLIANT**  
7.78 - 7.79 X 4.82 MM  
1.78 CARAT  
E  
VVS 2  
IDEAL  
61.8%  
85%  
Thin To Medium  
Pointed  
EXCELLENT  
EXCELLENT  
NONE  
None  
IGI LG685505995