



ELECTRONIC COPY

LABORATORY GROWN DIAMOND REPORT

March 11, 2025	
IGI Report Number	LG685523749
Description	LABORATORY GROWN DIAMOND
Shape and Cutting Style	ROUND BRILLIANT
Measurements	8.32 - 8.37 X 5.10 MM

GRADING RESULTS

Carat Weight	2.17 CARATS
Color Grade	D
Clarity Grade	VVS 1
Cut Grade	IDEAL

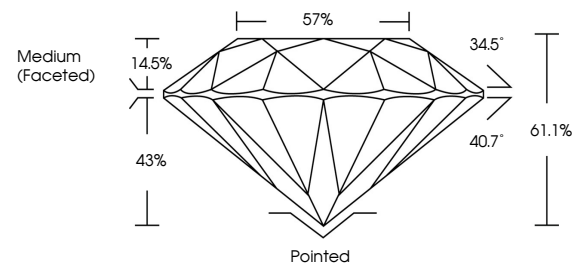
ADDITIONAL GRADING INFORMATION

Polish	EXCELLENT
Symmetry	EXCELLENT
Fluorescence	NONE
Inscription(s)	 LG685523749

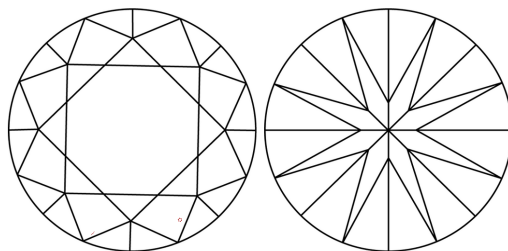
Comments: As Grown - No indication of post-growth treatment.
This Laboratory Grown Diamond was created by High Pressure High Temperature (HPHT) growth process.
Type II

LG685523749
Report verification at igi.org

PROPORTIONS

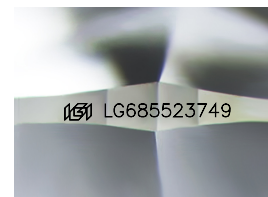


CLARITY CHARACTERISTICS



KEY TO SYMBOLS

Red symbols indicate internal characteristics.
Green symbols indicate external characteristics.



Sample Image Used

COLOR

D E F G H I J Faint Very Light Light

CLARITY

IF VWS¹⁻² VS¹⁻² SI¹⁻² I¹⁻³

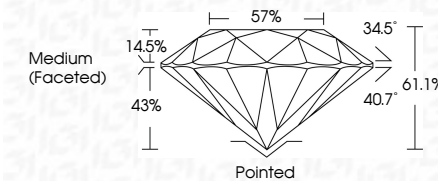
Internally Flawless	Very Very Slightly Included	Very Slightly Included	Slightly Included	Included
------------------------	--------------------------------	---------------------------	----------------------	----------



March 11, 2025	
IGI Report Number	LG685523749
Description	LABORATORY GROWN DIAMOND
Shape and Cutting Style	ROUND BRILLIANT
Measurements	8.32 - 8.37 X 5.10 MM

GRADING RESULTS

Carat Weight	2.17 CARATS
Color Grade	D
Clarity Grade	VVS 1
Cut Grade	IDEAL



ADDITIONAL GRADING INFORMATION

Polish	EXCELLENT
Symmetry	EXCELLENT
Fluorescence	NONE
Inscription(s)	 LG685523749
Comments: As Grown - No indication of post-growth treatment.	
This Laboratory Grown Diamond was created by High Pressure High Temperature (HPHT) growth process.	
Type II	



© IGI 2020, International Gemological Institute

FD - 10 20



THIS DOCUMENT WAS PRODUCED WITH THE FOLLOWING SECURITY MEASURES: SPECIAL DOCUMENT PAPER, INK SCREENS, WATERMARK, BACKGROUND DESIGNS, HOLOGRAM AND OTHER SECURITY FEATURES NOT LISTED AND DO EXCEED DOCUMENT SECURITY INDUSTRY GUIDELINE

www.igi.org

March 11, 2025	Carat Weight	2.17 CARATS
GI Report No. LG45923749	Color Grade	D
ROUND BRILLIANT	Clarity Grade	VVS 1
3.32 - 3.37 X 5.10 MM	Cur Grade	IDEAL
	Depth	61.1%
	Table	67%
	Grades	Medium (Faceted)
	Culet	Polished
	Patch	EXCELLENT
	Symmetry	EXCELLENT
	Fluorescence	NONE
	Inscriptions(s)	681 LG45923749
Comments:	<p>No growth - No indication of post-growth This Laboratory Grown Diamond was created by High Pressure High Temperature (HPHT) growth process.</p>	