



# INTERNATIONAL GEMOLOGICAL INSTITUTE

## LABORATORY GROWN DIAMOND REPORT

February 24, 2025

IGI Report Number

LG685537853

Description

LABORATORY GROWN DIAMOND

Shape and Cutting Style

CUT CORNERED RECTANGULAR MODIFIED  
BRILLIANT

Measurements

7.31 X 4.42 X 3.07 MM

### GRADING RESULTS

Carat Weight

0.93 CARAT

Color Grade

D

Clarity Grade

SI 1

### ADDITIONAL GRADING INFORMATION

Polish

EXCELLENT

Symmetry

VERY GOOD

Fluorescence

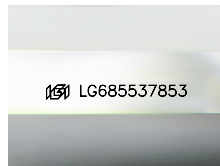
NONE

Inscription(s)

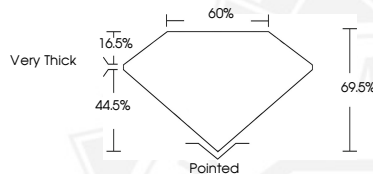
IGI LG685537853

Comments: This Laboratory Grown Diamond was created by  
Chemical Vapor Deposition (CVD) growth process.  
Type IIa

ELECTRONIC COPY



Sample Image Used



February 24, 2025

IGI Report Number LG685537853

CUT CORNERED RECTANGULAR  
MODIFIED BRILLIANT

LABORATORY GROWN DIAMOND

7.31 X 4.42 X 3.07 MM

Carat Weight 0.93 CARAT

Color Grade D

Clarity Grade SI 1

Polish EXCELLENT

Symmetry VERY GOOD

Fluorescence NONE

Inscription(s) IGI LG685537853

Comments: This Laboratory Grown  
Diamond was created by  
Chemical Vapor Deposition (CVD)  
growth process. Type IIa



February 24, 2025

IGI Report Number LG685537853

CUT CORNERED RECTANGULAR  
MODIFIED BRILLIANT

LABORATORY GROWN DIAMOND

7.31 X 4.42 X 3.07 MM

Carat Weight 0.93 CARAT

Color Grade D

Clarity Grade SI 1

Polish EXCELLENT

Symmetry VERY GOOD

Fluorescence NONE

Inscription(s) IGI LG685537853

Comments: This Laboratory Grown  
Diamond was created by  
Chemical Vapor Deposition (CVD)  
growth process. Type IIa



THIS DOCUMENT WAS PRODUCED WITH THE FOLLOWING SECURITY MEASURES: SPECIAL DOCUMENT PAPER, INK SCREENS, WATERMARK, BACKGROUND DESIGN, HOLOGRAM AND OTHER SECURITY FEATURES NOT LISTED AND DO EXCEED DOCUMENT SECURITY INDUSTRY GUIDELINES.

For terms & conditions and to verify this report, please visit [www.igi.org](http://www.igi.org)