



**INTERNATIONAL  
GEMOLOGICAL  
INSTITUTE**

**LABORATORY GROWN DIAMOND REPORT**

February 25, 2025

IGI Report Number **LG685558973**

Description **LABORATORY GROWN DIAMOND**

Shape and Cutting Style **CUT CORNERED RECTANGULAR MODIFIED  
BRILLIANT**

Measurements **5.22 X 4.16 X 2.68 MM**

**GRADING RESULTS**

Carat Weight **0.49 CARAT**

Color Grade **E**

Clarity Grade **VVS 2**

**ADDITIONAL GRADING INFORMATION**

Polish **VERY GOOD**

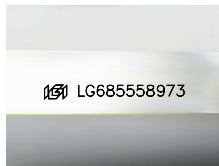
Symmetry **VERY GOOD**

Fluorescence **NONE**

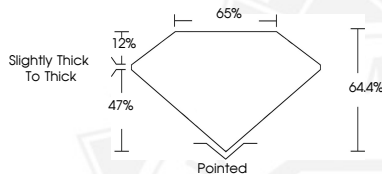
Inscription(s) **IGI LG685558973**

Comments: As Grown - No indication of post-growth treatment.  
This Laboratory Grown Diamond was created by High Pressure High  
Temperature (HPHT) growth process.  
Type II

**ELECTRONIC COPY**



Sample Image Used



February 25, 2025

IGI Report Number **LG685558973**

**CUT CORNERED RECTANGULAR  
MODIFIED BRILLIANT**

**LABORATORY GROWN DIAMOND**

**5.22 X 4.16 X 2.68 MM**

Carat Weight **0.49 CARAT**

Color Grade **E**

Clarity Grade **VVS 2**

Polish **VERY GOOD**

Symmetry **VERY GOOD**

Fluorescence **NONE**

Inscription(s) **IGI LG685558973**

Comments: As Grown - No  
indication of post-growth  
treatment. This Laboratory Grown  
Diamond was created by High  
Pressure High Temperature (HPHT)  
growth process. Type II



February 25, 2025

IGI Report Number **LG685558973**

**CUT CORNERED RECTANGULAR  
MODIFIED BRILLIANT**

**LABORATORY GROWN DIAMOND**

**5.22 X 4.16 X 2.68 MM**

Carat Weight **0.49 CARAT**

Color Grade **E**

Clarity Grade **VVS 2**

Polish **VERY GOOD**

Symmetry **VERY GOOD**

Fluorescence **NONE**

Inscription(s) **IGI LG685558973**

Comments: As Grown - No  
indication of post-growth  
treatment. This Laboratory Grown  
Diamond was created by High  
Pressure High Temperature (HPHT)  
growth process. Type II

THIS DOCUMENT WAS PRODUCED WITH THE FOLLOWING SECURITY MEASURES: SPECIAL DOCUMENT PAPER, INK SCREENS, WATERMARK, BACKGROUND DESIGN, HOLOGRAM AND OTHER SECURITY FEATURES NOT LISTED AND DO EXCEED DOCUMENT SECURITY INDUSTRY GUIDELINES.

For terms & conditions and to verify this report, please visit [www.igi.org](http://www.igi.org)