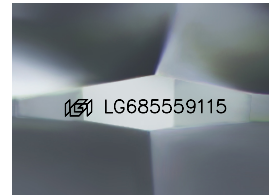
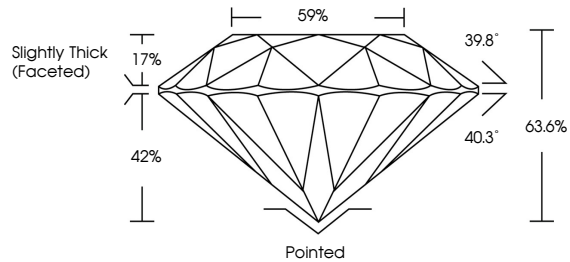




LABORATORY GROWN DIAMOND REPORT

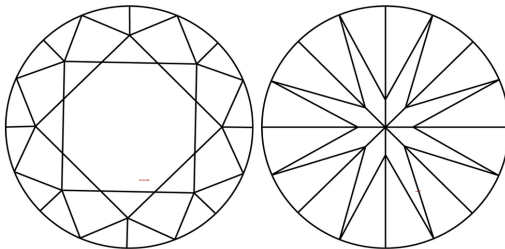
LG685559115
Report verification at igi.org

PROPORTIONS



Sample Image Used

CLARITY CHARACTERISTICS



KEY TO SYMBOLS

Red symbols indicate internal characteristics.
Green symbols indicate external characteristics.

COLOR

D E F G H I J Faint Very Light Light

CLARITY

IF WS¹⁻² VS¹⁻² SI¹⁻² I¹⁻³

| | | | | |
|------------------------|--------------------------------|---------------------------|----------------------|----------|
| Internally Flawless | Very Very Slightly Included | Very Slightly Included | Slightly Included | Included |
|------------------------|--------------------------------|---------------------------|----------------------|----------|



© IGI 2020, International Gemological Institute

FD - 10 20



February 25, 2025

IGI Report Number **LG685559115**

| | |
|-------------|--------------------------|
| Description | LABORATORY GROWN DIAMOND |
|-------------|--------------------------|

Shape and Cutting Style **ROUND BRILLIANT**

Measurements 6.27 - 6.29 X 4.00 MM

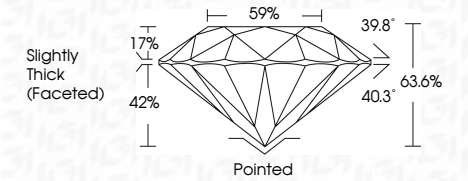
GRADING RESULTS

Carat Weight 1.01 CARAT

| | |
|-------------|---|
| Color Grade | E |
|-------------|---|

Clarity Grade VS 1

Cut Grade **GOOD**



ADDITIONAL GRADING INFORMATION

Polish **VERY GOOD**Symmetry **VERY GOOD**Fluorescence **NONE**Inscription(s) LG685559115

Comments: As Grown - No indication of post-growth treatment.

This Laboratory Grown Diamond was created by High Pressure High Temperature (HPHT) growth process.

Type II



IGI

| | | | |
|---------------------------|--|--------------------------|--|
| February 25, 2025 | 6.37 - 6.59 X 4.00 MM | 1.01 CARAT | |
| IGI Report No LG459597115 | Carat Weight | | |
| | Color Grade | | |
| | Clarity Grade | Vs 1 | |
| | Cut Grade | GOOD | |
| | Depth | 63.6% | |
| | Table | 59% | |
| | Girdle | Slightly Thick (Faceted) | |
| | Culet | Pointed | |
| | Polish | VERY GOOD | |
| | Symmetry | VERY GOOD | |
| | Fluorescence | NONE | |
| | Inscription(s) | IGI LG459597115 | |
| | Comments: | | |
| | As Grown - No indication of post-growth treatment. | | |
| | This Laboratory Grown Diamond was created by High Pressure High Temperature (HPHT) growth process. | | |
| | Type II | | |