



**ELECTRONIC COPY**

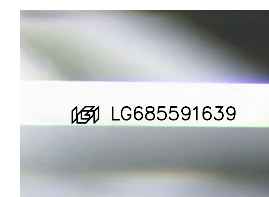
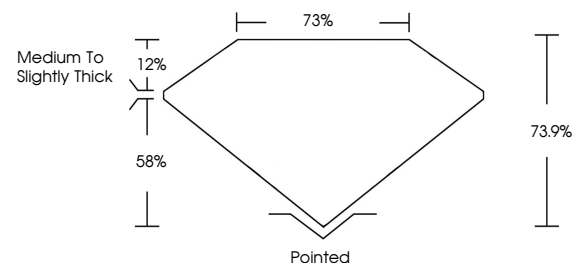
LG685591639  
Report verification at igi.org



March 24, 2025  
IGI Report Number **LG685591639**  
Description **LABORATORY GROWN DIAMOND**  
Shape and Cutting Style **PRINCESS CUT**  
Measurements **6.23 X 6.17 X 4.56 MM**  
**GRADING RESULTS**  
Carat Weight **1.55 CARAT**  
Color Grade **E**  
Clarity Grade **VVS 2**

March 24, 2025  
IGI Report Number **LG685591639**  
Description **LABORATORY GROWN DIAMOND**  
Shape and Cutting Style **PRINCESS CUT**  
Measurements **6.23 X 6.17 X 4.56 MM**

**PROPORTIONS**

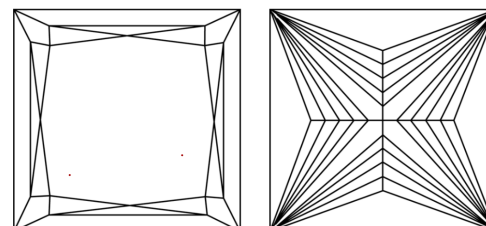


Sample Image Used

**GRADING RESULTS**

Carat Weight **1.55 CARAT**  
Color Grade **E**  
Clarity Grade **VVS 2**

**CLARITY CHARACTERISTICS**



**ADDITIONAL GRADING INFORMATION**

Polish **EXCELLENT**  
Symmetry **EXCELLENT**  
Fluorescence **NONE**  
Inscription(s) **IGI LG685591639**

Comments: This Laboratory Grown Diamond was created by Chemical Vapor Deposition (CVD) growth process. Type IIa. Indications of post-growth treatment.

**KEY TO SYMBOLS**

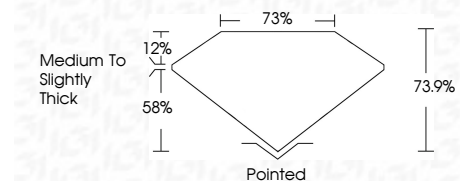
Red symbols indicate internal characteristics.  
Green symbols indicate external characteristics.

**COLOR**

D E F G H I J Faint Very Light Light

**CLARITY**

IF	VS <sup>1-2</sup>	VS <sup>1-2</sup>	SI <sup>1-2</sup>	I <sup>1-3</sup>
Internally Flawless	Very Very Slightly Included	Very Slightly Included	Slightly Included	Included



**ADDITIONAL GRADING INFORMATION**

Polish **EXCELLENT**  
Symmetry **EXCELLENT**  
Fluorescence **NONE**  
Inscription(s) **IGI LG685591639**  
Comments: This Laboratory Grown Diamond was created by Chemical Vapor Deposition (CVD) growth process. Type IIa. Indications of post-growth treatment.



March 24, 2025  
IGI Report No. **LG685591639**  
**PRINCESS CUT**  
**6.23 X 6.17 X 4.56 MM**  
Carat Weight **1.55 CARAT**  
Color Grade **E**  
Clarity Grade **VVS 2**  
Depth **73.9%**  
Table **73%**  
Girdle **Medium to Slightly Thick**  
Culet **Pointed**  
Polish **EXCELLENT**  
Symmetry **EXCELLENT**  
Fluorescence **NONE**  
Inscription(s) **IGI LG685591639**  
Comments: This Laboratory Grown Diamond was created by Chemical Vapor Deposition (CVD) growth process. Type IIa. Indications of post-growth treatment.