



ELECTRONIC COPY

LG685596931
Report verification at igi.org



February 26, 2025

IGI Report Number **LG685596931**

Description **LABORATORY GROWN DIAMOND**

Shape and Cutting Style **ROUND BRILLIANT**

Measurements **8.38 - 8.44 X 5.22 MM**

GRADING RESULTS

Carat Weight **2.28 CARATS**

Color Grade **D**

Clarity Grade **VS 1**

Cut Grade **IDEAL**

February 26, 2025

IGI Report Number **LG685596931**

Description **LABORATORY GROWN DIAMOND**

Shape and Cutting Style **ROUND BRILLIANT**

Measurements **8.38 - 8.44 X 5.22 MM**

GRADING RESULTS

Carat Weight **2.28 CARATS**

Color Grade **D**

Clarity Grade **VS 1**

Cut Grade **IDEAL**

ADDITIONAL GRADING INFORMATION

Polish **EXCELLENT**

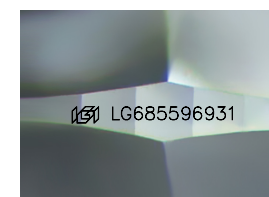
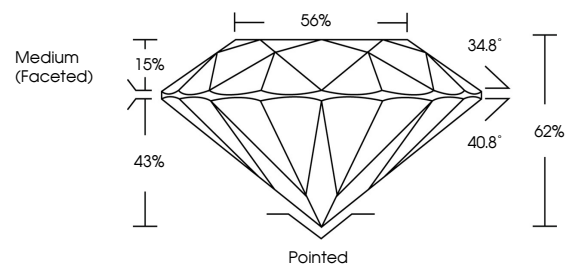
Symmetry **EXCELLENT**

Fluorescence **NONE**

Inscription(s) **LG685596931**

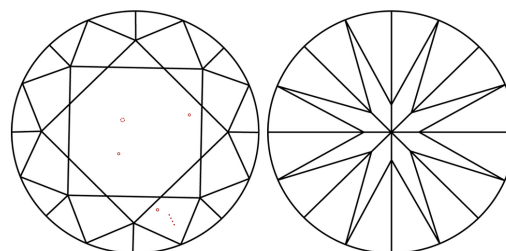
Comments: HEARTS & ARROWS
This Laboratory Grown Diamond was created by
Chemical Vapor Deposition (CVD) growth process.
Type IIa

PROPORTIONS



Sample Image Used

CLARITY CHARACTERISTICS



KEY TO SYMBOLS

Red symbols indicate internal characteristics.
Green symbols indicate external characteristics.



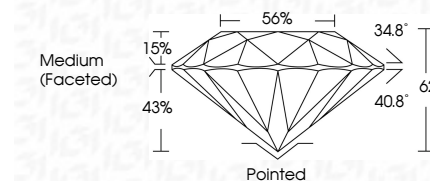
COLOR

D E F G H I J Faint Very Light Light

CLARITY

IF VS¹⁻² VS¹⁻² SI¹⁻² I¹⁻³

Internally Flawless Very Very Slightly Included Very Slightly Included Slightly Included Included



ADDITIONAL GRADING INFORMATION

Polish **EXCELLENT**

Symmetry **EXCELLENT**

Fluorescence **NONE**

Inscription(s) **LG685596931**

Comments: HEARTS & ARROWS
This Laboratory Grown Diamond was created by
Chemical Vapor Deposition (CVD) growth process.
Type IIa



February 26, 2025	IGI Report No LG685596931	2.28 CARATS	D	VS 1	IDEAL	62%	56%	Medium (Faceted)	Pointed	EXCELLENT	EXCELLENT	NONE	LG685596931											
IGI Report No	LG685596931	Carat Weight	2.28 CARATS	Color Grade	D	Clarity Grade	VS 1	Cut Grade	IDEAL	Depth	62%	Table	56%	Medium (Faceted)	Culet	Pointed	Polish	EXCELLENT	Symmetry	EXCELLENT	Fluorescence	NONE	Inscription(s)	LG685596931

Comments: HEARTS & ARROWS
This Laboratory Grown Diamond was created by Chemical Vapor Deposition (CVD) growth process.
Type IIa