



ELECTRONIC COPY

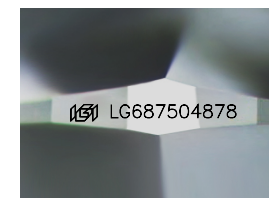
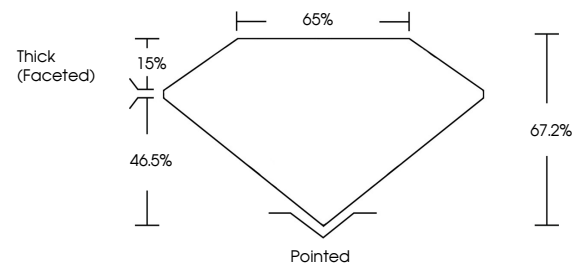
LG687504878
Report verification at igi.org



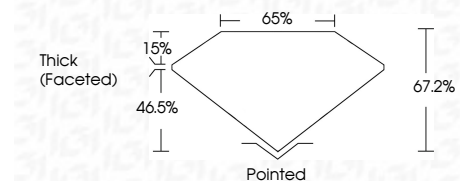
March 27, 2025
IGI Report Number **LG687504878**
Description **LABORATORY GROWN DIAMOND**
Shape and Cutting Style **CUSHION MODIFIED BRILLIANT**
Measurements **13.18 X 8.95 X 6.01 MM**
GRADING RESULTS
Carat Weight **6.05 CARATS**
Color Grade **FANCY VIVID PINK**
Clarity Grade **VS 2**

March 27, 2025
IGI Report Number **LG687504878**
Description **LABORATORY GROWN DIAMOND**
Shape and Cutting Style **CUSHION MODIFIED BRILLIANT**
Measurements **13.18 X 8.95 X 6.01 MM**

PROPORTIONS



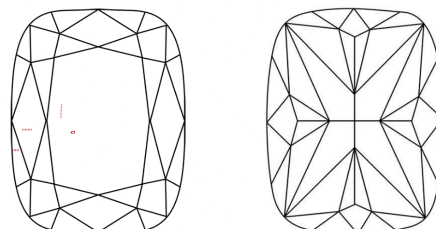
Sample Image Used



GRADING RESULTS

Carat Weight **6.05 CARATS**
Color Grade **FANCY VIVID PINK**
Clarity Grade **VS 2**

CLARITY CHARACTERISTICS



KEY TO SYMBOLS

Red symbols indicate internal characteristics.
Green symbols indicate external characteristics.

COLOR

D E F G H I J Faint Very Light Light

CLARITY

IF	VS ¹⁻²	VS ¹⁻²	SI ¹⁻²	I ¹⁻³
Internally Flawless	Very Very Slightly Included	Very Slightly Included	Slightly Included	Included

ADDITIONAL GRADING INFORMATION

Polish **EXCELLENT**
Symmetry **EXCELLENT**
Fluorescence **SLIGHT**
Inscription(s) **IGI LG687504878**
Comments: This Laboratory Grown Diamond was created by Chemical Vapor Deposition (CVD) growth process. Indications of post-growth treatment.

ADDITIONAL GRADING INFORMATION

Polish **EXCELLENT**
Symmetry **EXCELLENT**
Fluorescence **SLIGHT**
Inscription(s) **IGI LG687504878**

Comments: This Laboratory Grown Diamond was created by Chemical Vapor Deposition (CVD) growth process. Indications of post-growth treatment.



March 27, 2025
IGI Report No LG687504878
CUSHION MODIFIED BRILLIANT
6.05 CARATS
FANCY VIVID PINK
VS 2
13.18 X 8.95 X 6.01 MM
67.2%
65%
Thick (Faceted)
Pointed
EXCELLENT
EXCELLENT
SLIGHT
IGI LG687504878
Comments: This Laboratory Grown Diamond was created by Chemical Vapor Deposition (CVD) growth process. Indications of post-growth treatment.