



**ELECTRONIC COPY**

LG687507131  
Report verification at igi.org



April 18, 2025

IGI Report Number **LG687507131**

Description **LABORATORY GROWN DIAMOND**

Shape and Cutting Style **PRINCESS CUT**

Measurements **10.67 X 10.22 X 6.96 MM**

**GRADING RESULTS**

Carat Weight **7.01 CARATS**

Color Grade **F**

Clarity Grade **VVS 2**

April 18, 2025

IGI Report Number **LG687507131**

Description **LABORATORY GROWN DIAMOND**

Shape and Cutting Style **PRINCESS CUT**

Measurements **10.67 X 10.22 X 6.96 MM**

**GRADING RESULTS**

Carat Weight **7.01 CARATS**

Color Grade **F**

Clarity Grade **VVS 2**

**ADDITIONAL GRADING INFORMATION**

Polish **EXCELLENT**

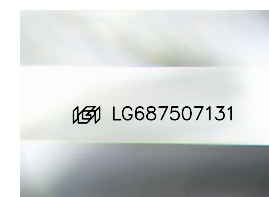
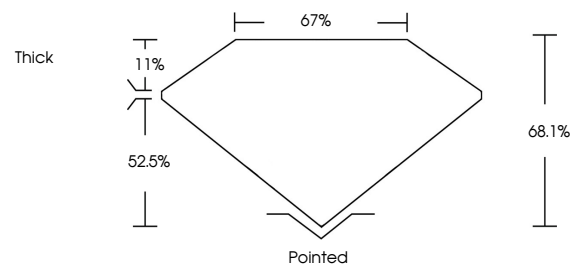
Symmetry **EXCELLENT**

Fluorescence **NONE**

Inscription(s) **IGI LG687507131**

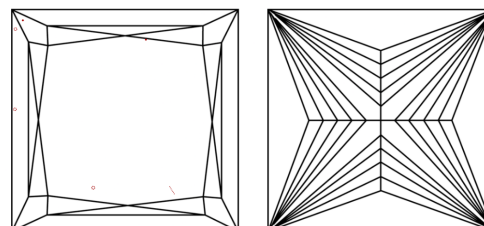
Comments: This Laboratory Grown Diamond was created by Chemical Vapor Deposition (CVD) growth process.  
Type IIa

**PROPORTIONS**



Sample Image Used

**CLARITY CHARACTERISTICS**



**KEY TO SYMBOLS**

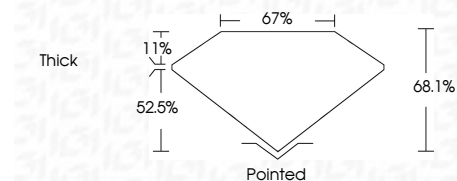
Red symbols indicate internal characteristics.  
Green symbols indicate external characteristics.

**COLOR**

D E F G H I J Faint Very Light Light

**CLARITY**

IF	VS <sup>1-2</sup>	VS <sup>1-2</sup>	SI <sup>1-2</sup>	I <sup>1-3</sup>
Internally Flawless	Very Very Slightly Included	Very Slightly Included	Slightly Included	Included



**ADDITIONAL GRADING INFORMATION**

Polish **EXCELLENT**

Symmetry **EXCELLENT**

Fluorescence **NONE**

Inscription(s) **IGI LG687507131**

Comments: This Laboratory Grown Diamond was created by Chemical Vapor Deposition (CVD) growth process.  
Type IIa



**IGI**



April 18, 2025  
IGI Report No. LG687507131  
PRINCESS CUT

7.01 CARATS  
F

10.67 X 10.22 X 6.96 MM  
VVS 2  
68.1%  
67%  
Thick

Polished  
EXCELLENT  
EXCELLENT  
NONE  
IGI LG687507131

Comments: This Laboratory Grown Diamond was created by Chemical Vapor Deposition (CVD) growth process.  
Type IIa