



ELECTRONIC COPY

LG687527473
Report verification at igi.org



March 12, 2025
IGI Report Number **LG687527473**
Description **LABORATORY GROWN DIAMOND**
Shape and Cutting Style **SQUARE CUSHION MODIFIED BRILLIANT**
Measurements **8.32 X 7.91 X 5.28 MM**
GRADING RESULTS
Carat Weight **3.09 CARATS**
Color Grade **FANCY VIVID YELLOW**
Clarity Grade **VS 1**

March 12, 2025
IGI Report Number **LG687527473**
Description **LABORATORY GROWN DIAMOND**
Shape and Cutting Style **SQUARE CUSHION MODIFIED BRILLIANT**
Measurements **8.32 X 7.91 X 5.28 MM**

GRADING RESULTS

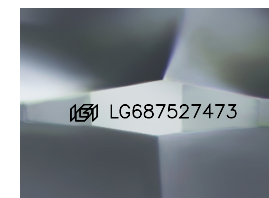
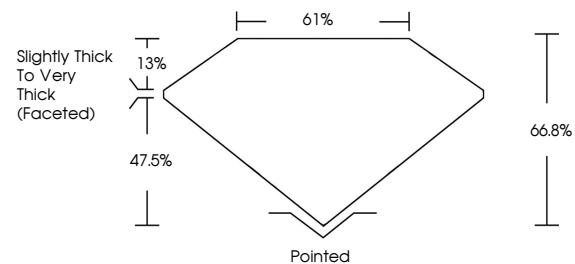
Carat Weight **3.09 CARATS**
Color Grade **FANCY VIVID YELLOW**
Clarity Grade **VS 1**

ADDITIONAL GRADING INFORMATION

Polish **EXCELLENT**
Symmetry **EXCELLENT**
Fluorescence **NONE**
Inscription(s) **IGI LG687527473**

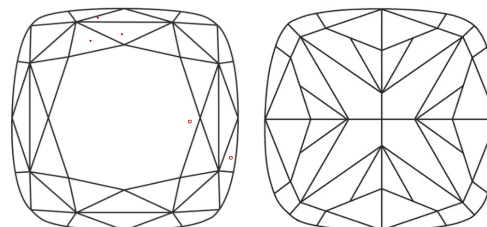
Comments: This Laboratory Grown Diamond was created by Chemical Vapor Deposition (CVD) growth process.

PROPORTIONS



Sample Image Used

CLARITY CHARACTERISTICS



KEY TO SYMBOLS

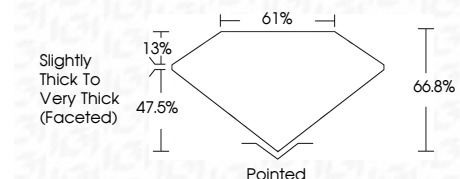
Red symbols indicate internal characteristics.
Green symbols indicate external characteristics.

COLOR

D E F G H I J Faint Very Light Light

CLARITY

IF	WS ¹⁻²	VS ¹⁻²	SI ¹⁻²	I ¹⁻³
Internally Flawless	Very Very Slightly Included	Very Slightly Included	Slightly Included	Included



ADDITIONAL GRADING INFORMATION

Polish **EXCELLENT**
Symmetry **EXCELLENT**
Fluorescence **NONE**
Inscription(s) **IGI LG687527473**
Comments: This Laboratory Grown Diamond was created by Chemical Vapor Deposition (CVD) growth process.



March 12, 2025
IGI Report No. **LG687527473**
SQUARE CUSHION MODIFIED BRILLIANT
8.32 X 7.91 X 5.28 MM
Carat Weight **3.09 CARATS**
Color Grade **FANCY VIVID YELLOW**
Clarity Grade **VS 1**
Depth **66.8%**
Table **61%**
Girdle **Slightly Thick To Very Thick (Faceted)**
Culet **Pointed**
Polish **EXCELLENT**
Symmetry **EXCELLENT**
Fluorescence **NONE**
Inscription(s) **IGI LG687527473**
Comments: This Laboratory Grown Diamond was created by Chemical Vapor Deposition (CVD) growth process.