

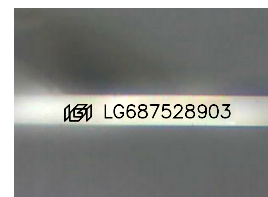
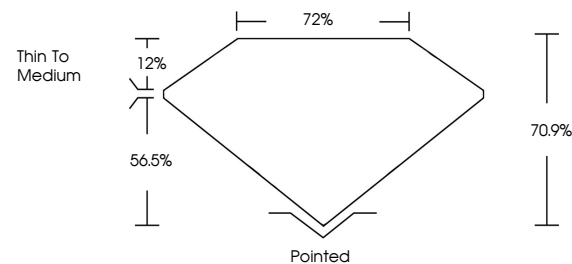


ELECTRONIC COPY

LABORATORY GROWN DIAMOND REPORT

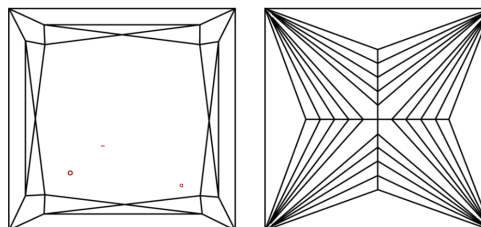
LG687528903
Report verification at igi.org

PROPORTIONS



Sample Image Used

CLARITY CHARACTERISTICS



KEY TO SYMBOLS

Red symbols indicate internal characteristics.
Green symbols indicate external characteristics.

COLOR

D E F G H I J Faint Very Light Light

CLARITY

IF	VS ¹⁻²	VS ¹⁻²	SI ¹⁻²	I ¹⁻³
Internally Flawless	Very Very Slightly Included	Very Slightly Included	Slightly Included	Included

LABORATORY GROWN DIAMOND REPORT



March 4, 2025

IGI Report Number **LG687528903**Description **LABORATORY GROWN DIAMOND**Shape and Cutting Style **PRINCESS CUT**

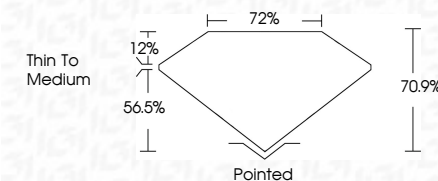
Measurements **8.91 X 8.76 X 6.21 MM**

GRADING RESULTS

Carat Weight **4.36 CARATS**

Color Grade	F
-------------	---

Clarity Grade VS 2



ADDITIONAL GRADING INFORMATION

Polish **EXCELLENT**Symmetry **EXCELLENT**Fluorescence **NONE**Inscription(s) LG687528903

Comments: This Laboratory Grown Diamond was created by Chemical Vapor Deposition (CVD) growth process.
Type IIa



www.igi.org

© IGI 2020, International Gemological Institute

FD - 10 20



THIS DOCUMENT WAS PRODUCED WITH THE FOLLOWING SECURITY MEASURES: SPECIAL DOCUMENT PAPER, INK SCREENS, WATERMARK, BACKGROUND DESIGNS, HOLOGRAM AND OTHER SECURITY FEATURES NOT LISTED AND DO EXCEED DOCUMENT SECURITY INDUSTRY GUIDELINES

March 4, 2025
GI Report No LG687528903
PRINCESS CLIT

4.36 CARATS	VS 2	72%	Thin To Medium	Pointed	EXCELLENT	EXCELLENT	NONE	4811 (5457792903)
Color Grade	Clarity Grade	Depth	Table	Girdle	Quilet	Polish	Symmetry	Fluorescence
Carat Weight								Fluorescence(s)
9.91 X 8.76 X 6.21 MM								

Comments:
This Laboratory Grown Diamond was
created by Chemical Vapor Deposition
(CVD) growth process.