

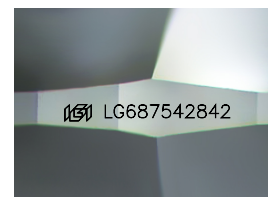
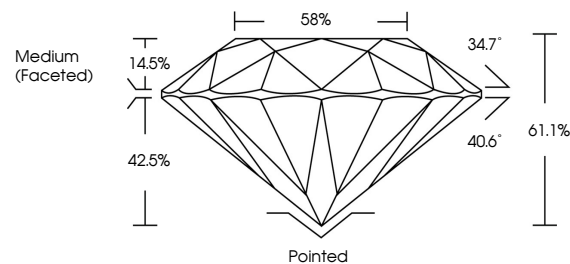


ELECTRONIC COPY

LABORATORY GROWN DIAMOND REPORT

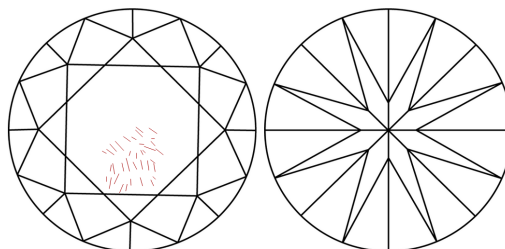
LG687542842
Report verification at igi.org

PROPORTIONS



Sample Image Used

CLARITY CHARACTERISTICS



KEY TO SYMBOLS

Red symbols indicate internal characteristics.
Green symbols indicate external characteristics.

COLOR

D E F G H I J Faint Very Light Light

CLARITY

IF WS¹⁻² VS¹⁻² SI¹⁻² |¹⁻³

Internally Flawless	Very Very Slightly Included	Very Slightly Included	Slightly Included	Included
------------------------	--------------------------------	---------------------------	----------------------	----------



© IGI 2020, International Gemological Institute

FD - 10 20

www.igi.org

LABORATORY GROWN DIAMOND REPORT



March 17, 2025

IGI Report Number **LG687542842**

Description	LABORATORY GROWN DIAMOND
-------------	--------------------------

Shape and Cutting Style **ROUND BRILLIANT**

Measurements 6.52 - 6.55 X 3.99 MM

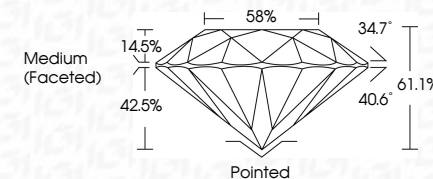
GRADING RESULTS

Carat Weight 1.05 CARAT

Color Grade **E**

Clarity Grade SI 2

Cut Grade **IDEAL**



ADDITIONAL GRADING INFORMATION

Polish **EXCELLENT**Symmetry **EXCELLENT**Fluorescence **NONE**Inscription(s) LG687542842

Comments: As Grown - No indication of post-growth treatment.

This Laboratory Grown Diamond was created by High Pressure High Temperature (HPHT) growth process.

Type II



March 17, 2025	Carat Weight	1.05 CARAT
SI Report No. LG567526942	Color Grade	E
ROUND BRILLIANT	Cut/Clarity Grade	SI 2
SI 52 - 4.55 X 5.95 MM	Color	IDEAL
	Depth	61.1%
	Table	59%
	Girdle	Medium (Faceted)
	Culet	Pointed
	Polish	EXCELLENT
	Symmetry	EXCELLENT
	Fluorescence	NONE
	Annotations(s)	gsm LG567526942

Comments: As Grown - No indication of post-growth treatment.

This Laboratory Growth Diamond was created by High Pressure High Temperature (HPHT) growth process.