



ELECTRONIC COPY

LG687547835
Report verification at igi.org



February 28, 2025

IGI Report Number **LG687547835**

Description **LABORATORY GROWN DIAMOND**

Shape and Cutting Style **PRINCESS CUT**

Measurements **7.84 X 7.80 X 5.67 MM**

GRADING RESULTS

Carat Weight **3.11 CARATS**

Color Grade **E**

Clarity Grade **VS 1**

February 28, 2025
IGI Report Number **LG687547835**
Description **LABORATORY GROWN DIAMOND**
Shape and Cutting Style **PRINCESS CUT**
Measurements **7.84 X 7.80 X 5.67 MM**

GRADING RESULTS

Carat Weight **3.11 CARATS**

Color Grade **E**

Clarity Grade **VS 1**

ADDITIONAL GRADING INFORMATION

Polish **EXCELLENT**

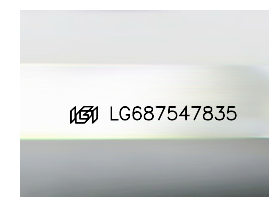
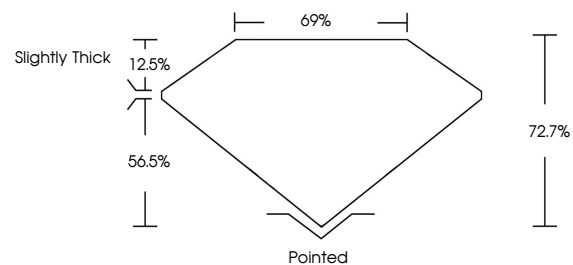
Symmetry **EXCELLENT**

Fluorescence **NONE**

Inscription(s) **LG687547835**

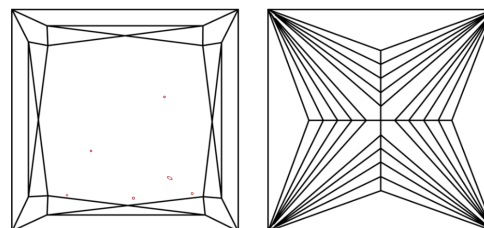
Comments: This Laboratory Grown Diamond was created by Chemical Vapor Deposition (CVD) growth process.
Type IIa

PROPORTIONS



Sample Image Used

CLARITY CHARACTERISTICS



KEY TO SYMBOLS

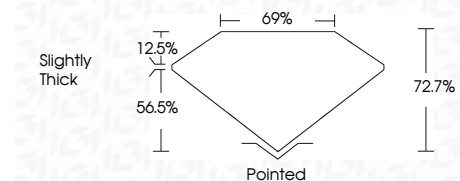
Red symbols indicate internal characteristics.
Green symbols indicate external characteristics.

COLOR

D E F G H I J Faint Very Light Light

CLARITY

IF	VS ¹⁻²	VS ¹⁻²	SI ¹⁻²	I ¹⁻³
Internally Flawless	Very Very Slightly Included	Very Slightly Included	Slightly Included	Included



ADDITIONAL GRADING INFORMATION

Polish **EXCELLENT**

Symmetry **EXCELLENT**

Fluorescence **NONE**

Inscription(s) **LG687547835**

Comments: This Laboratory Grown Diamond was created by Chemical Vapor Deposition (CVD) growth process.
Type IIa



February 28, 2025
IGI Report No. **LG687547835**
PRINCESS CUT

3.11 CARATS
E

7.84 X 7.80 X 5.67 MM
72.7%
69%
Slightly Thick

Pointed
EXCELLENT
EXCELLENT
NONE
NONE
IGI LG687547835

Comments: This Laboratory Grown Diamond was created by Chemical Vapor Deposition (CVD) growth process.
Type IIa