



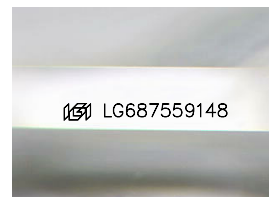
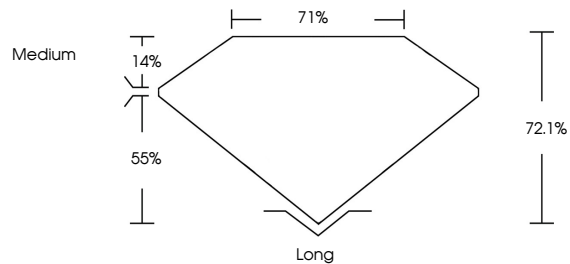
**INTERNATIONAL  
GEMOLOGICAL  
INSTITUTE**

**ELECTRONIC COPY**

## LABORATORY GROWN DIAMOND REPORT

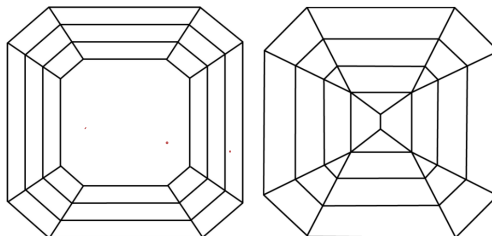
LG687559148  
Report verification at [igi.org](https://www.igi.org)

## PROPORTIONS



Sample Image Used

## CLARITY CHARACTERISTICS



## KEY TO SYMBOLS

Red symbols indicate internal characteristics.  
Green symbols indicate external characteristics.

**COLOR**

D E F G H I J Faint Very Light Light

## CLARITY

IF	WS <sup>1-2</sup>	VS <sup>1-2</sup>	SI <sup>1-2</sup>	I <sup>1-3</sup>
----	-------------------	-------------------	-------------------	------------------

Internally Flawless	Very Very Slightly Included	Very Slightly Included	Slightly Included	Included
------------------------	--------------------------------	---------------------------	----------------------	----------



February 28, 2025

IGI Report Number **LG687559148**

Description	LABORATORY GROWN DIAMOND
-------------	--------------------------

Shape and Cutting Style **MODIFIED SQUARE EMERALD CUT**

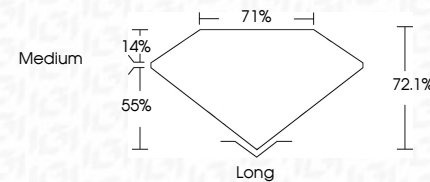
Measurements **5.55 X 5.13 X 3.70 MM**

## GRADING RESULTS

Carat Weight 1.00 CARAT

Color Grade	D
-------------	---

Clarity Grade VS 1



### ADDITIONAL GRADING INFORMATION

Polish **EXCELLENT**Symmetry **EXCELLENT**Fluorescence **NONE**Inscription(s)  LG68755914

Comments: This Laboratory Grown Diamond was created by Chemical Vapor Deposition (CVD) growth process.  
Type IIa



IG



© IGI 2020, International Gemological Institute

FD - 10 20

**www.igi.org**

THIS DOCUMENT WAS PRODUCED WITH THE FOLLOWING SECURITY MEASURES: SPECIAL DOCUMENT PAPER, INK SCREENS, WATERMARK, RADIOMER AND DEBRIS, HIGH QUALITY AND OTHER SECURITY FEATURES ARE NOT LISTED, AND DO NOT HAVE TO BE REPRODUCED WITH COLOR COPY.

February 28, 2025	1.00 CARAT
GI Report No LG567559148	D
MODIFIED SQUARE EMERALD CUT	Vs1
5.55 X 5.13 X 3.70 MM	72.1%
Carat Weight	71%
Color Grade	Medium
Clarity Grade	Long
Depth	EXCELLENT
Table	EXCELLENT
Girdle	NONE
Culet	ISSUE567559148
Polish	
Symmetry	
Fluorescence	
Annotations(s)	
Comments:	
The Laboratory Grown Diamond was created by Chemical Vapor Deposition (CVD) growth process.	
Type IIA	