



ELECTRONIC COPY

LG687578349
Report verification at igi.org



March 20, 2025
IGI Report Number **LG687578349**
Description **LABORATORY GROWN DIAMOND**
Shape and Cutting Style **MODIFIED RECTANGULAR
CUSHION STEP CUT**
Measurements **9.02 X 6.00 X 4.46 MM**
GRADING RESULTS
Carat Weight **2.51 CARATS**
Color Grade **E**
Clarity Grade **VS 1**

March 20, 2025
IGI Report Number **LG687578349**
Description **LABORATORY GROWN DIAMOND**
Shape and Cutting Style **MODIFIED RECTANGULAR
CUSHION STEP CUT**
Measurements **9.02 X 6.00 X 4.46 MM**

GRADING RESULTS

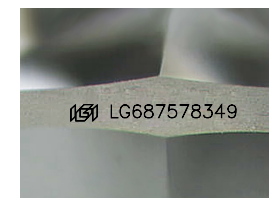
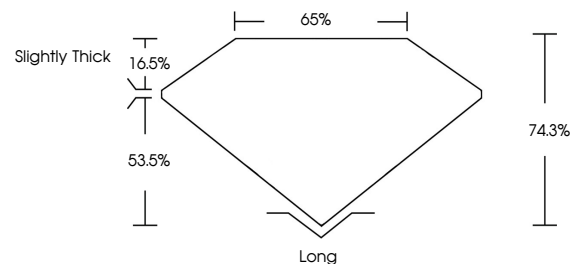
Carat Weight **2.51 CARATS**
Color Grade **E**
Clarity Grade **VS 1**

ADDITIONAL GRADING INFORMATION

Polish **EXCELLENT**
Symmetry **EXCELLENT**
Fluorescence **NONE**
Inscription(s) **IGI LG687578349**

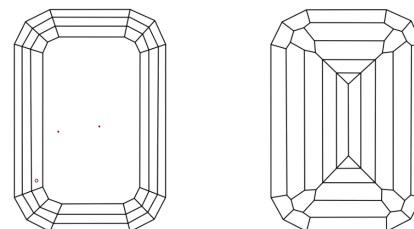
Comments: This Laboratory Grown Diamond was created by Chemical Vapor Deposition (CVD) growth process.
Type IIa

PROPORTIONS



Sample Image Used

CLARITY CHARACTERISTICS



KEY TO SYMBOLS

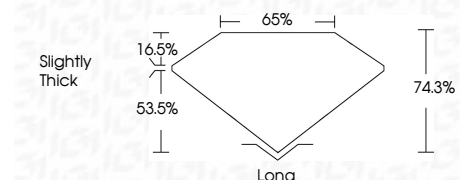
Red symbols indicate internal characteristics.
Green symbols indicate external characteristics.

COLOR

D E F G H I J Faint Very Light Light

CLARITY

| IF | WS ¹⁻² | VS ¹⁻² | SI ¹⁻² | I ¹⁻³ |
|---------------------|-----------------------------|------------------------|-------------------|------------------|
| Internally Flawless | Very Very Slightly Included | Very Slightly Included | Slightly Included | Included |



ADDITIONAL GRADING INFORMATION

Polish **EXCELLENT**
Symmetry **EXCELLENT**
Fluorescence **NONE**
Inscription(s) **IGI LG687578349**
Comments: This Laboratory Grown Diamond was created by Chemical Vapor Deposition (CVD) growth process.
Type IIa



March 20, 2025
IGI Report No **LG687578349**
MODIFIED RECTANGULAR CUSHION STEP CUT
9.02 X 6.00 X 4.46 MM
Carat Weight **2.51 CARATS**
Color Grade **E**
Clarity Grade **VS 1**
Depth **74.3%**
Table **16.5%**
Girdle **Slightly Thick**
Culet **Long**
Polish **EXCELLENT**
Symmetry **EXCELLENT**
Fluorescence **NONE**
Inscription(s) **IGI LG687578349**
Comments: This Laboratory Grown Diamond was created by Chemical Vapor Deposition (CVD) growth process.
Type IIa