

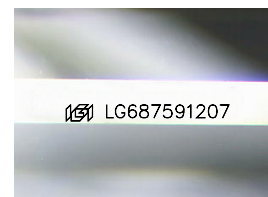
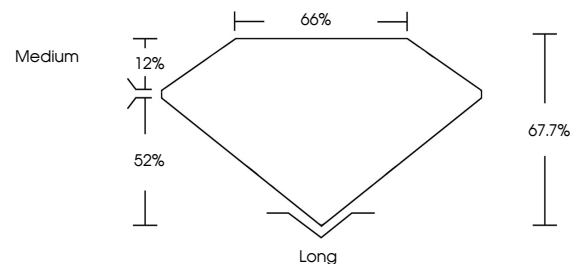


ELECTRONIC COPY

LABORATORY GROWN DIAMOND REPORT

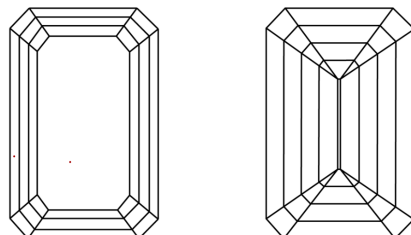
LG687591207
Report verification at igi.org

PROPORTIONS



Sample Image Used

CLARITY CHARACTERISTICS



KEY TO SYMBOLS

Red symbols indicate internal characteristics.
Green symbols indicate external characteristics.

COLOR

D E F G H I J Faint Very Light Light

CLARITY

IF VWS¹⁻² VS¹⁻² SI¹⁻² I¹⁻³

| | | | | |
|------------------------|--------------------------------|---------------------------|----------------------|----------|
| Internally Flawless | Very Very Slightly Included | Very Slightly Included | Slightly Included | Included |
|------------------------|--------------------------------|---------------------------|----------------------|----------|

LABORATORY GROWN DIAMOND REPORT



March 6, 2025

IGI Report Number **LG687591207**

| | |
|-------------|--------------------------|
| Description | LABORATORY GROWN DIAMOND |
|-------------|--------------------------|

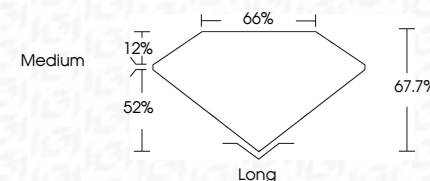
Shape and Cutting Style **EMERALD CUT**

Measurements **8.00 X 5.72 X 3.87 MM**

GRADING RESULTS

Carat Weight **1.70 CARAT**

Color Grade E

Clarity Grade **VVS 1**

ADDITIONAL GRADING INFORMATION

Polish **EXCELLENT**Symmetry **EXCELLENT**Fluorescence **NONE**Inscription(s) LG687591207

Comments: This Laboratory Grown Diamond was created by Chemical Vapor Deposition (CVD) growth process.
Type IIa



www.igi.org

© IGI 2020, International Gemological Institute

FD - 10 20



THIS DOCUMENT WAS PRODUCED WITH THE FOLLOWING SECURITY MEASURES: SPECIAL DOCUMENT PAPER, INK SCREENS, WATERMARK, BACKGROUND DESIGNS, HOLOGRAM AND OTHER SECURITY FEATURES NOT LISTED AND DO EXCEED DOCUMENT SECURITY INDUSTRY GUIDELINES

March 6, 2025
GI Report No LG687591207

| | |
|--------------|--------------|
| 1.70 CARAT | 1.70 CARAT |
| Color | Color |
| Clarity | Clarity |
| Depth | Depth |
| Table | Table |
| Grade | Grade |
| Culet | Culet |
| Polish | Polish |
| Symmetry | Symmetry |
| Fluorescence | Fluorescence |
| WVS 1 | WVS 1 |
| 67.7% | 67.7% |
| 66% | 66% |
| Medium | Medium |
| Long | Long |
| EXCELLENT | EXCELLENT |
| EXCELLENT | EXCELLENT |
| NONE | NONE |
| 100% | 100% |

Comments:
This Laboratory Grown Diamond was created by Chemical Vapor Deposition (CVD) growth process.