



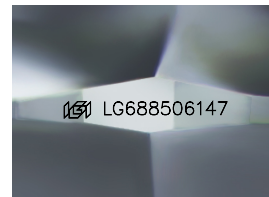
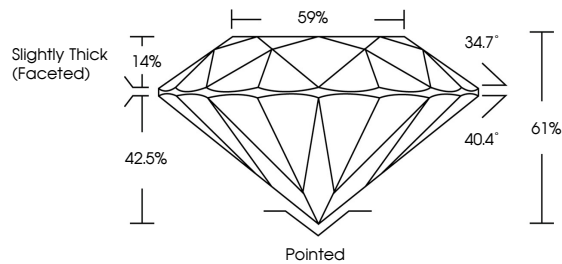
**INTERNATIONAL
GEMOLOGICAL
INSTITUTE**

ELECTRONIC COPY

LABORATORY GROWN DIAMOND REPORT

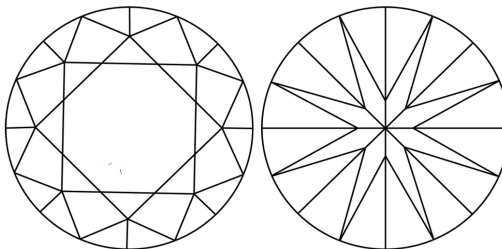
LG688506147
Report verification at [igi.org](https://www.igi.org)

PROPORTIONS



Sample Image Used

CLARITY CHARACTERISTICS



KEY TO SYMBOLS

Red symbols indicate internal characteristics.
Green symbols indicate external characteristics.

COLOR

D E F G H I J Faint Very Light Light

CLARITY

IF WS¹⁻² VS¹⁻² SI¹⁻² |¹⁻³

Internally Flawless	Very Very Slightly Included	Very Slightly Included	Slightly Included	Included
------------------------	--------------------------------	---------------------------	----------------------	----------



March 8, 2025

IGI Report Number **LG688506147**

Description	LABORATORY GROWN DIAMOND
-------------	--------------------------

Shape and Cutting Style **ROUND BRILLIANT**

Measurements 8.31 - 8.35 X 5.07 MM

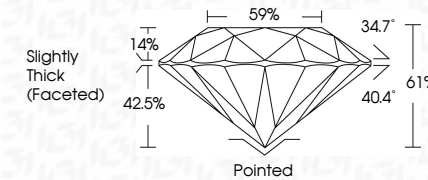
GRADING RESULTS

Carat Weight **2.22 CARATS**

Color Grade	E
-------------	---

Clarity Grade **VVS 2**

Cut Grade **EXCELLENT**



ADDITIONAL GRADING INFORMATION

Polish **EXCELLENCE**Symmetry **EXCELLENCE**

Fluorescence NONI

Inscription(s)  LG68850614

Comments: This Laboratory Grown Diamond was created by Chemical Vapor Deposition (CVD) growth process.
Type IIa



IG



© IGI 2020, International Gemological Institute

FD - 10 20

www.igi.org

THIS DOCUMENT WAS PRODUCED WITH THE FOLLOWING SECURITY MEASURES: SPECIAL DOCUMENT PAPER, INK SCREENS, WATERMARK, BATHOPHONY AND DESKTOP LOCKS, AND OTHER SECURITY FEATURES NOT LISTED. AND DO NOT DISCLOSE TO ANY UNAUTHORIZED PERSONS.

March 8, 2025	GI Report No LG588006147
ROUND BRILLIANT	
3.31 - 6.35 X 5.07 MM	2.22 CARATS
Carat Weight	
Color Grade	VVS 2
Clarity Grade	EXCELLENT
Our Grade	61%
Depth	65%
Table	
Girdle	Slightly Thick (Faceted)
Culet	Pointed
Polish	EXCELLENT
Symmetry	EXCELLENT
Fluorescence	NONE
Inscriptions(s)	4891 LG588006147
Comments: This is a Chemically Grown Diamond was created by Chemical Vapor Deposition (CVD) growth process. Type IIa	