



ELECTRONIC COPY

LABORATORY GROWN DIAMOND REPORT

March 9, 2025	
IGI Report Number	LG689504833
Description	LABORATORY GROWN DIAMOND
Shape and Cutting Style	ROUND BRILLIANT
Measurements	9.92 - 10.03 X 6.13 MM

GRADING RESULTS

Carat Weight	3.71 CARATS
Color Grade	E
Clarity Grade	VVS 2
Cut Grade	EXCELLENT

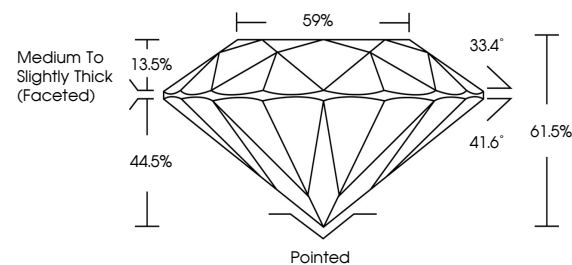
ADDITIONAL GRADING INFORMATION

Polish	EXCELLENT
Symmetry	EXCELLENT
Fluorescence	NONE
Inscription(s)	 LG689504833

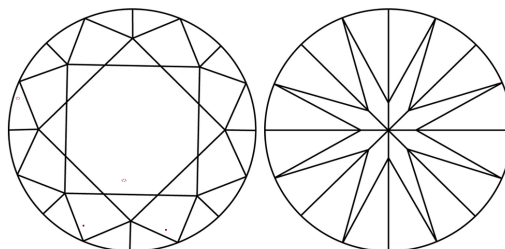
Comments: This Laboratory Grown Diamond was created by Chemical Vapor Deposition (CVD) growth process.
Type IIa

LG689504833
Report verification at igi.org

PROPORTIONS

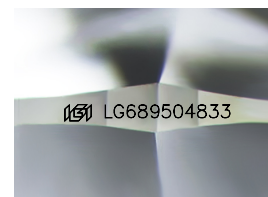


CLARITY CHARACTERISTICS



KEY TO SYMBOLS

Red symbols indicate internal characteristics.
Green symbols indicate external characteristics.



Sample Image Used

COLOR

D E F G H I J Faint Very Light Light

CLARITY

IF WS¹⁻² VS¹⁻² SI¹⁻² |¹⁻³

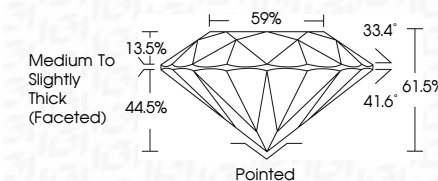
Internally Flawless	Very Very Slightly Included	Very Slightly Included	Slightly Included	Included
------------------------	--------------------------------	---------------------------	----------------------	----------



March 9, 2025	
IGI Report Number	LG689504833
Description	LABORATORY GROWN DIAMOND
Shape and Cutting Style	ROUND BRILLIANT
Measurements	9.92 - 10.03 X 6.13 MM

GRADING RESULTS

Carat Weight	3.71 CARATS
Color Grade	E
Clarity Grade	VVS 2
Cut Grade	EXCELLENT



ADDITIONAL GRADING INFORMATION

Polish	EXCELLENT
Symmetry	EXCELLENT
Fluorescence	NONE
Inscription(s)	 LG689504833
<p>Comments: This Laboratory Grown Diamond was created by Chemical Vapor Deposition (CVD) growth process.</p> <p>Type IIa</p>	



© IGI 2020, International Gemological Institute

FD - 10 20

www.igi.org

THIS DOCUMENT WAS PRODUCED WITH THE FOLLOWING SECURITY MEASURES: SPECIAL DOCUMENT PAPER, INK SCREENS, WATERMARK, BACKGROUND DESIGNS, HOLOGRAM AND OTHER SECURITY FEATURES NOT LISTED AND DO EXCEED DOCUMENT SECURITY INDUSTRY GUIDELINE

March 9, 2025	GI Report No. LG68904833	3.71 CARATS	E	VVS 2	Pointed	Comments: This is a Natural, Fancy, Colored, and Treated by Chemical Vapor Deposition (CVD) growth process. Type IIa
ROUND BRILLIANT				EXCELLENT	EXCELLENT	
92 - 10.03 X 6.13 MM				61.05%	NONE	
Color Grade	Clarity Grade	Depth	Table	95%	1691 LG68904833	
Carat Weight	Cut Grade	Girdle		Medium to Slightly Thick (Faceted)		
					Culet	
					Polish	
					Symmetry	
					Fluorescence	
					Inscriptions(s)	