



# INTERNATIONAL GEMOLOGICAL INSTITUTE

## LABORATORY GROWN DIAMOND REPORT

March 17, 2025  
IGI Report Number **LG689508897**  
Description **LABORATORY GROWN DIAMOND**  
Shape and Cutting Style **PRINCESS CUT**  
Measurements **3.67 X 3.67 X 2.57 MM**

### GRADING RESULTS

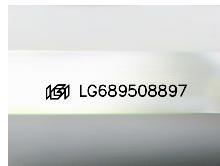
Carat Weight **0.31 CARAT**  
Color Grade **E**  
Clarity Grade **INTERNALLY FLAWLESS**

### ADDITIONAL GRADING INFORMATION

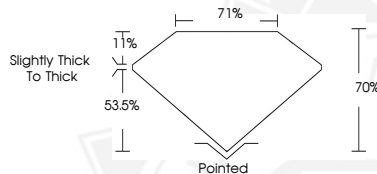
Polish **VERY GOOD**  
Symmetry **VERY GOOD**  
Fluorescence **NONE**  
Inscription(s) **IGI LG689508897**

Comments: This Laboratory Grown Diamond was created by Chemical Vapor Deposition (CVD) growth process.  
Type IIa

ELECTRONIC COPY



Sample Image Used



March 17, 2025  
IGI Report Number **LG689508897**  
PRINCESS CUT  
LABORATORY GROWN DIAMOND  
**3.67 X 3.67 X 2.57 MM**  
Carat Weight **0.31 CARAT**  
Color Grade **E**  
Clarity Grade **I.F.**  
Polish **VERY GOOD**  
Symmetry **VERY GOOD**  
Fluorescence **NONE**  
Inscription(s) **IGI LG689508897**  
Comments: This Laboratory Grown Diamond was created by Chemical Vapor Deposition (CVD) growth process. Type IIa



March 17, 2025  
IGI Report Number **LG689508897**  
PRINCESS CUT  
LABORATORY GROWN DIAMOND  
**3.67 X 3.67 X 2.57 MM**  
Carat Weight **0.31 CARAT**  
Color Grade **E**  
Clarity Grade **I.F.**  
Polish **VERY GOOD**  
Symmetry **VERY GOOD**  
Fluorescence **NONE**  
Inscription(s) **IGI LG689508897**  
Comments: This Laboratory Grown Diamond was created by Chemical Vapor Deposition (CVD) growth process. Type IIa



THIS DOCUMENT WAS PRODUCED WITH THE FOLLOWING SECURITY MEASURES: SPECIAL DOCUMENT PAPER, INK SCREENS, WATERMARK, BACKGROUND DESIGN, HOLOGRAM AND OTHER SECURITY FEATURES NOT LISTED AND DO EXCEED DOCUMENT SECURITY INDUSTRY GUIDELINES.

For terms & conditions and to verify this report, please visit [www.igi.org](http://www.igi.org)