

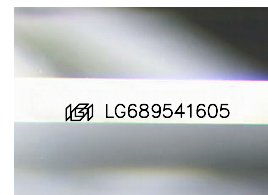
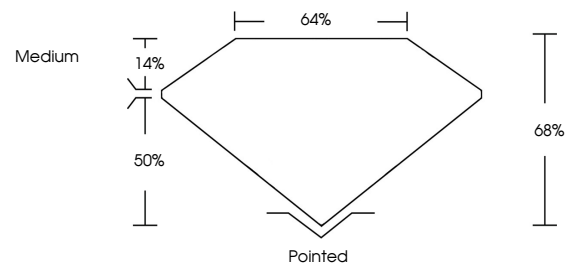


ELECTRONIC COPY

LABORATORY GROWN DIAMOND REPORT

LG689541605
Report verification at igi.org

PROPORTIONS



Sample Image Used

COLOR

D E F G H I J Faint Very Light Light

CLARITY

IF WS¹⁻² VS¹⁻² SI¹⁻² |¹⁻³

Internally Flawless	Very Very Slightly Included	Very Slightly Included	Slightly Included	Included
------------------------	--------------------------------	---------------------------	----------------------	----------



© IGI 2020, International Gemological Institute

FD - 10 20

www.igi.org

LABORATORY GROWN DIAMOND REPORT



March 18, 2025

IGI Report Number **LG689541605**

Description	LABORATORY GROWN DIAMOND
-------------	--------------------------

Shape and Cutting Style

CUT CORNERED
RECTANGULAR MODIFIED
BRILLIANT

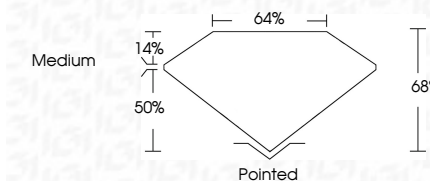
Measurements 8.99 X 6.25 X 4.25 MM

GRADING RESULTS

Carat Weight **2.10 CARATS**

Color Grade **E**Clarity Grade VVS 2

Cut Grade **EXCELLENT**



ADDITIONAL GRADING INFORMATION

Polish **EXCELLENT**Symmetry **EXCELLENT**

Fluorescence NON

Inscription(s) LG689541605

Comments: This Laboratory Grown Diamond was created by Chemical Vapor Deposition (CVD) growth process.
Type IIa



March 18, 2025	Carat Weight	2.10 CARATS
SI REPORT NO. LG69561405	Color Grade	E
CUF CORRECTION BECT. MODIFIED BRILLANT	Clarity Grade	VVS 2
	Depth	EXCELLENT
	Table	66%
	Girdle	64%
		Medium
	Culet	Pointed
	Polish	EXCELLENT
	Symmetry	EXCELLENT
	Fluorescence	NONE
	Inscriptions(s)	169 LG69561405
	Comments:	<p>Laboratory Grown Diamond was created by Chemical Vapor Deposition (CVD) growth process.</p> <p>Type IIA</p>