



**ELECTRONIC COPY**

LG689542586  
Report verification at igi.org



March 22, 2025  
IGI Report Number **LG689542586**  
Description **LABORATORY GROWN DIAMOND**  
Shape and Cutting Style **CUSHION MODIFIED BRILLIANT**  
Measurements **7.66 X 6.67 X 4.53 MM**  
**GRADING RESULTS**  
Carat Weight **2.08 CARATS**  
Color Grade **FANCY INTENSE YELLOW**  
Clarity Grade **VVS 2**

**LABORATORY GROWN DIAMOND REPORT**

March 22, 2025  
IGI Report Number **LG689542586**  
Description **LABORATORY GROWN DIAMOND**  
Shape and Cutting Style **CUSHION MODIFIED BRILLIANT**  
Measurements **7.66 X 6.67 X 4.53 MM**

**GRADING RESULTS**

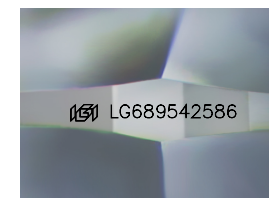
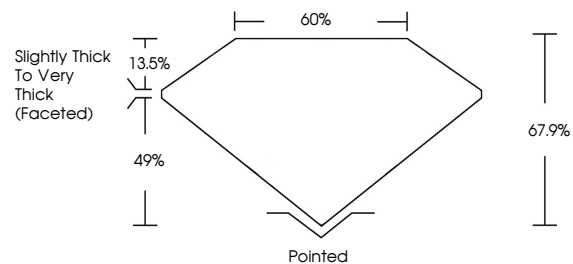
Carat Weight **2.08 CARATS**  
Color Grade **FANCY INTENSE YELLOW**  
Clarity Grade **VVS 2**

**ADDITIONAL GRADING INFORMATION**

Polish **EXCELLENT**  
Symmetry **EXCELLENT**  
Fluorescence **NONE**  
Inscription(s) **LG689542586**

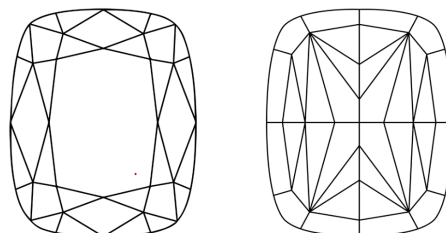
Comments: This Laboratory Grown Diamond was created by Chemical Vapor Deposition (CVD) growth process.

**PROPORTIONS**



Sample Image Used

**CLARITY CHARACTERISTICS**



**KEY TO SYMBOLS**

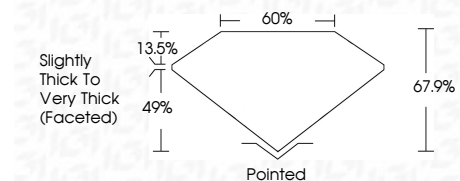
Red symbols indicate internal characteristics.  
Green symbols indicate external characteristics.

**COLOR**

D E F G H I J Faint Very Light Light

**CLARITY**

IF	VS <sup>1-2</sup>	VS <sup>1-2</sup>	SI <sup>1-2</sup>	I <sup>1-3</sup>
Internally Flawless	Very Very Slightly Included	Very Slightly Included	Slightly Included	Included



**ADDITIONAL GRADING INFORMATION**

Polish **EXCELLENT**  
Symmetry **EXCELLENT**  
Fluorescence **NONE**  
Inscription(s) **LG689542586**  
Comments: This Laboratory Grown Diamond was created by Chemical Vapor Deposition (CVD) growth process.



March 22, 2025  
IGI Report No **LG689542586**  
**CUSHION MODIFIED BRILLIANT**  
**2.08 CARATS**  
Carat Weight **FANCY INTENSE YELLOW**  
Color Grade **VVS 2**  
Depth **67.9%**  
Table **49%**  
Girdle **Slightly Thick To Very Thick (Faceted)**  
Culet **Pointed**  
Polish **EXCELLENT**  
Symmetry **EXCELLENT**  
Fluorescence **NONE**  
Inscription(s) **LG689542586**  
Comments: This Laboratory Grown Diamond was created by Chemical Vapor Deposition (CVD) growth process.