



**ELECTRONIC COPY**

LG689542645  
Report verification at igi.org



March 22, 2025  
IGI Report Number **LG689542645**  
Description **LABORATORY GROWN DIAMOND**  
Shape and Cutting Style **CUSHION MODIFIED BRILLIANT**  
Measurements **10.16 X 8.14 X 5.42 MM**  
**GRADING RESULTS**  
Carat Weight **4.09 CARATS**  
Color Grade **FANCY VIVID YELLOW**  
Clarity Grade **VS 1**

March 22, 2025  
IGI Report Number **LG689542645**  
Description **LABORATORY GROWN DIAMOND**  
Shape and Cutting Style **CUSHION MODIFIED BRILLIANT**  
Measurements **10.16 X 8.14 X 5.42 MM**

**GRADING RESULTS**

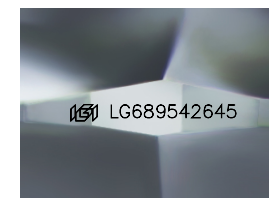
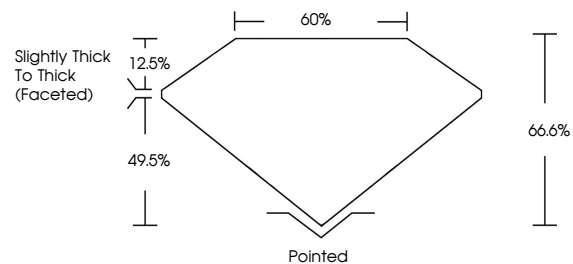
Carat Weight **4.09 CARATS**  
Color Grade **FANCY VIVID YELLOW**  
Clarity Grade **VS 1**

**ADDITIONAL GRADING INFORMATION**

Polish **EXCELLENT**  
Symmetry **EXCELLENT**  
Fluorescence **NONE**  
Inscription(s) **IGI LG689542645**

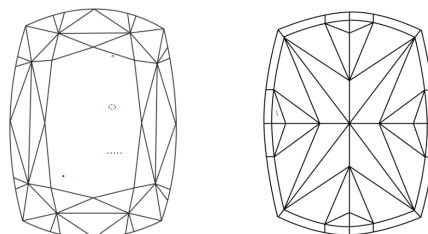
Comments: This Laboratory Grown Diamond was created by Chemical Vapor Deposition (CVD) growth process.

**PROPORTIONS**



Sample Image Used

**CLARITY CHARACTERISTICS**



**KEY TO SYMBOLS**

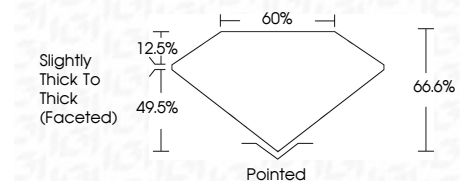
Red symbols indicate internal characteristics.  
Green symbols indicate external characteristics.

**COLOR**

D E F G H I J Faint Very Light Light

**CLARITY**

IF	VS <sup>1-2</sup>	VS <sup>1-2</sup>	SI <sup>1-2</sup>	I <sup>1-3</sup>
Internally Flawless	Very Very Slightly Included	Very Slightly Included	Slightly Included	Included



**ADDITIONAL GRADING INFORMATION**

Polish **EXCELLENT**  
Symmetry **EXCELLENT**  
Fluorescence **NONE**  
Inscription(s) **IGI LG689542645**  
Comments: This Laboratory Grown Diamond was created by Chemical Vapor Deposition (CVD) growth process.



March 22, 2025  
IGI Report No LG689542645  
**CUSHION MODIFIED BRILLIANT**  
10.16 X 8.14 X 5.42 MM  
4.09 CARATS  
FANCY VIVID YELLOW  
VS 1  
66.6%  
49.5%  
Slightly Thick To Thick (Faceted)  
Pointed  
EXCELLENT  
EXCELLENT  
NONE  
IGI LG689542645  
Comments: This Laboratory Grown Diamond was created by Chemical Vapor Deposition (CVD) growth process.