



ELECTRONIC COPY

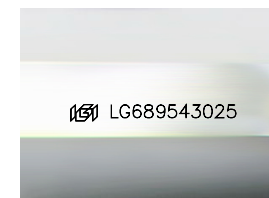
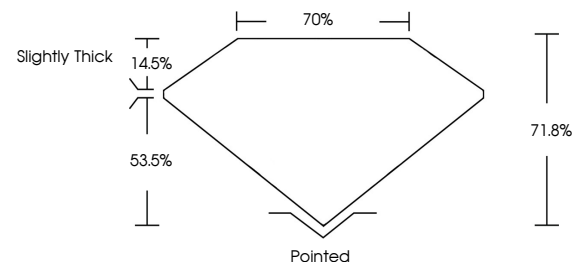
LG689543025
Report verification at igi.org



March 10, 2025
IGI Report Number **LG689543025**
Description **LABORATORY GROWN DIAMOND**
Shape and Cutting Style **PRINCESS CUT**
Measurements **10.28 X 10.18 X 7.31 MM**
GRADING RESULTS
Carat Weight **7.00 CARATS**
Color Grade **D**
Clarity Grade **VS 1**

March 10, 2025
IGI Report Number **LG689543025**
Description **LABORATORY GROWN DIAMOND**
Shape and Cutting Style **PRINCESS CUT**
Measurements **10.28 X 10.18 X 7.31 MM**

PROPORTIONS

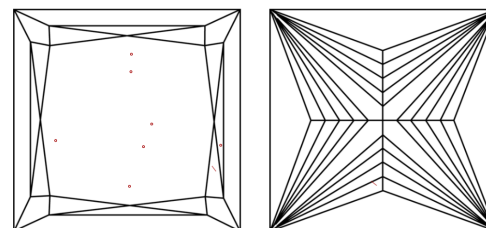


Sample Image Used

GRADING RESULTS

Carat Weight **7.00 CARATS**
Color Grade **D**
Clarity Grade **VS 1**

CLARITY CHARACTERISTICS



KEY TO SYMBOLS

Red symbols indicate internal characteristics.
Green symbols indicate external characteristics.

ADDITIONAL GRADING INFORMATION

Polish **EXCELLENT**
Symmetry **EXCELLENT**
Fluorescence **NONE**
Inscription(s) **IGI LG689543025**

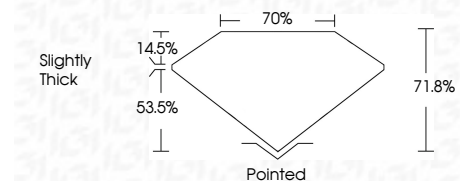
Comments: This Laboratory Grown Diamond was created by Chemical Vapor Deposition (CVD) growth process.
Type IIa

COLOR

D E F G H I J Faint Very Light Light

CLARITY

IF	VS ¹⁻²	VS ¹⁻²	SI ¹⁻²	I ¹⁻³
Internally Flawless	Very Very Slightly Included	Very Slightly Included	Slightly Included	Included



ADDITIONAL GRADING INFORMATION

Polish **EXCELLENT**
Symmetry **EXCELLENT**
Fluorescence **NONE**
Inscription(s) **IGI LG689543025**
Comments: This Laboratory Grown Diamond was created by Chemical Vapor Deposition (CVD) growth process.
Type IIa



IGI



March 10, 2025
IGI Report No. **LG689543025**
PRINCESS CUT
10.28 X 10.18 X 7.31 MM
7.00 CARATS
D
71.0%
70%
Slightly Thick
Pointed
EXCELLENT
EXCELLENT
NONE
IGI LG689543025
Comments: This Laboratory Grown Diamond was created by Chemical Vapor Deposition (CVD) growth process.
Type IIa