



**ELECTRONIC COPY**

LG689546558  
Report verification at igi.org



March 13, 2025  
IGI Report Number **LG689546558**  
Description **LABORATORY GROWN DIAMOND**  
Shape and Cutting Style **RECTANGULAR CUSHION MIXED CUT**  
Measurements **15.29 X 9.65 X 5.33 MM**  
**GRADING RESULTS**  
Carat Weight **8.03 CARATS**  
Color Grade **G**  
Clarity Grade **VS 1**

March 13, 2025  
IGI Report Number **LG689546558**  
Description **LABORATORY GROWN DIAMOND**  
Shape and Cutting Style **RECTANGULAR CUSHION MIXED CUT**  
Measurements **15.29 X 9.65 X 5.33 MM**

**GRADING RESULTS**

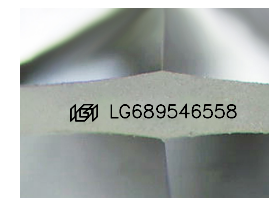
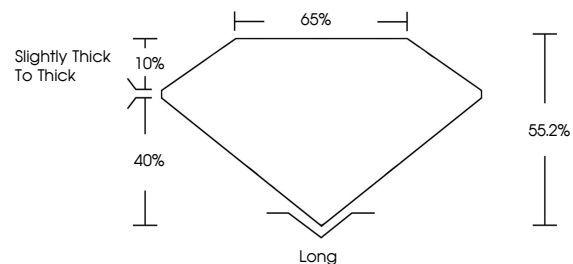
Carat Weight **8.03 CARATS**  
Color Grade **G**  
Clarity Grade **VS 1**

**ADDITIONAL GRADING INFORMATION**

Polish **EXCELLENT**  
Symmetry **EXCELLENT**  
Fluorescence **NONE**  
Inscription(s) **IGI LG689546558**

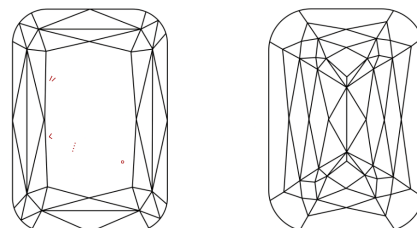
Comments: This Laboratory Grown Diamond was created by Chemical Vapor Deposition (CVD) growth process. Type IIa

**PROPORTIONS**



Sample Image Used

**CLARITY CHARACTERISTICS**



**KEY TO SYMBOLS**

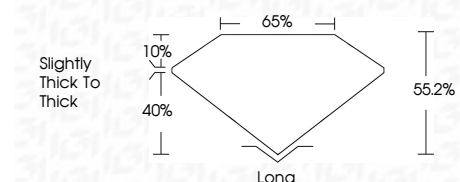
Red symbols indicate internal characteristics.  
Green symbols indicate external characteristics.

**COLOR**

D E F G H I J Faint Very Light Light

**CLARITY**

IF	VS <sup>1-2</sup>	VS <sup>1-2</sup>	SI <sup>1-2</sup>	I <sup>1-3</sup>
Internally Flawless	Very Very Slightly Included	Very Slightly Included	Slightly Included	Included



**ADDITIONAL GRADING INFORMATION**

Polish **EXCELLENT**  
Symmetry **EXCELLENT**  
Fluorescence **NONE**  
Inscription(s) **IGI LG689546558**  
Comments: This Laboratory Grown Diamond was created by Chemical Vapor Deposition (CVD) growth process. Type IIa



March 13, 2025  
IGI Report No LG689546558  
RECTANGULAR CUSHION MIXED CUT  
15.29 X 9.65 X 5.33 MM  
Carat Weight 8.03 CARATS  
Color Grade G  
Clarity Grade VS 1  
Depth 55.2%  
Table 40%  
Girdle Slightly thick to thick  
Culet Long  
Polish EXCELLENT  
Symmetry EXCELLENT  
Fluorescence NONE  
Inscription(s) IGI LG689546558  
Comments: This Laboratory Grown Diamond was created by Chemical Vapor Deposition (CVD) growth process. Type IIa