

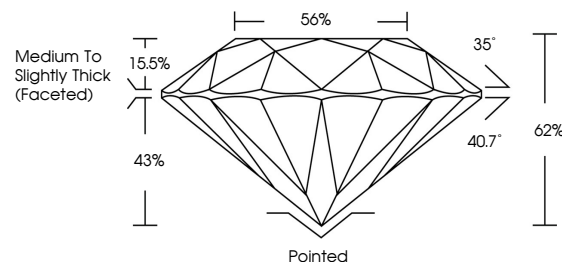


ELECTRONIC COPY

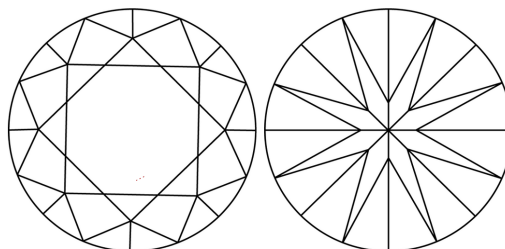
LABORATORY GROWN DIAMOND REPORT

LG689566238
Report verification at lgi.org

PROPORTIONS



CLARITY CHARACTERISTICS



KEY TO SYMBOLS

Red symbols indicate internal characteristics.
Green symbols indicate external characteristics.

COLOR

D E F G H I J Faint Very Light Light

CLARITY

IF WS¹⁻² VS¹⁻² SI¹⁻² |¹⁻³

| | | | | |
|------------------------|--------------------------------|---------------------------|----------------------|----------|
| Internally Flawless | Very Very Slightly Included | Very Slightly Included | Slightly Included | Included |
|------------------------|--------------------------------|---------------------------|----------------------|----------|

LABORATORY GROWN DIAMOND REPORT

IGI Report Number **LG689566238**Description **LABORATORY GROWN DIAMOND**Shape and Cutting Style **ROUND BRILLIANT**

Measurements 9.51 - 9.56 X 5.91 MM

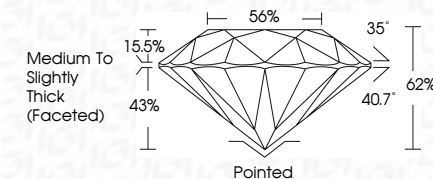
GRADING RESULTS

Carat Weight **3.33 CARATS**

Color Grade D

Clarity Grade **VVS 1**

Cut Grade **IDEAL**



ADDITIONAL GRADING INFORMATION

Polish **EXCELLENT**Symmetry **EXCELLENT**Fluorescence **NONE**Inscription(s)  LG689566238

Comments: As Grown - No indication of post-growth treatment.

This Laboratory Grown Diamond was created by High Pressure High Temperature (HPHT) growth process.



© IGI 2020, International Gemological Institute

FD - 10 20

www.igi.org



THIS DOCUMENT WAS PRODUCED WITH THE FOLLOWING SECURITY MEASURES: SPECIAL DOCUMENT PAPER, INK SCREENS, WATERMARK, BACKGROUND DESIGNS, HOLOGRAM AND OTHER SECURITY FEATURES NOT LISTED AND DO EXCEED DOCUMENT SECURITY INDUSTRY GUIDELINES

April 22, 2025
GI Report No LG689566238
ROUND BRILLIANT

| | | |
|-----------------------|------------------------------------|-----------------|
| 9.51 - 9.55 X 5.91 MM | 3.33 CARATS | D |
| Carat Weight | VVS 1 | IDEAL |
| Color Grade | 62% | 56% |
| Clarity Grade | Medium to Slightly Thick (faceted) | Pointed |
| Depth | | EXCELLENT |
| Table | | EXCELLENT |
| Girdle | | SYMMETRY |
| Culet | | FLUORESCENCE |
| Polish | | NON-FLUORESCENT |
| Symmetry | | FUNCTIONAL |
| Fluorescence | | |

Comments:
As Grown - No indication of post-growth treatment.