



ELECTRONIC COPY

LG689572696
Report verification at igi.org



March 21, 2025
IGI Report Number **LG689572696**
Description **LABORATORY GROWN DIAMOND**
Shape and Cutting Style **SQUARE CUSHION BRILLIANT**
Measurements **7.34 X 7.27 X 4.75 MM**

GRADING RESULTS

Carat Weight **2.08 CARATS**
Color Grade **FANCY LIGHT PINK**
Clarity Grade **SI 1**

March 21, 2025
IGI Report Number **LG689572696**
Description **LABORATORY GROWN DIAMOND**
Shape and Cutting Style **SQUARE CUSHION BRILLIANT**
Measurements **7.34 X 7.27 X 4.75 MM**

GRADING RESULTS

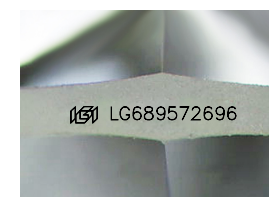
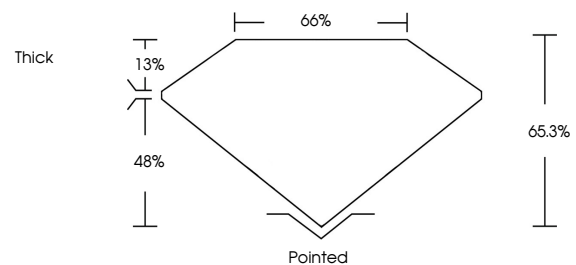
Carat Weight **2.08 CARATS**
Color Grade **FANCY LIGHT PINK**
Clarity Grade **SI 1**

ADDITIONAL GRADING INFORMATION

Polish **EXCELLENT**
Symmetry **EXCELLENT**
Fluorescence **SLIGHT**
Inscription(s) **IGI LG689572696**

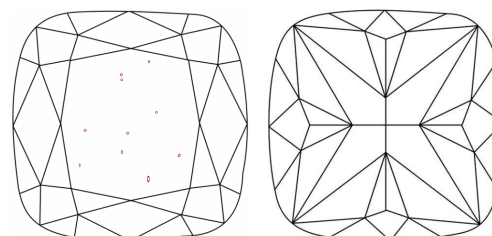
Comments: This Laboratory Grown Diamond was created by Chemical Vapor Deposition (CVD) growth process.
Indications of post-growth treatment.

PROPORTIONS



Sample Image Used

CLARITY CHARACTERISTICS



KEY TO SYMBOLS

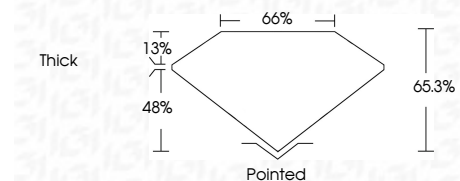
Red symbols indicate internal characteristics.
Green symbols indicate external characteristics.

COLOR

D E F G H I J Faint Very Light Light

CLARITY

IF	VS ¹⁻²	VS ¹⁻²	SI ¹⁻²	I ¹⁻³
Internally Flawless	Very Very Slightly Included	Very Slightly Included	Slightly Included	Included



ADDITIONAL GRADING INFORMATION

Polish **EXCELLENT**
Symmetry **EXCELLENT**
Fluorescence **SLIGHT**
Inscription(s) **IGI LG689572696**
Comments: This Laboratory Grown Diamond was created by Chemical Vapor Deposition (CVD) growth process.
Indications of post-growth treatment.



March 21, 2025
IGI Report No **LG689572696**
SQUARE CUSHION BRILLIANT
2.08 CARATS
Carat Weight
Color Grade **FANCY LIGHT PINK**
Clarity Grade **SI 1**
Depth **65.3%**
Table **66%**
Girdle **Thick**
Culet **Pointed**
Polish **EXCELLENT**
Symmetry **EXCELLENT**
Fluorescence **SLIGHT**
Inscription(s) **IGI LG689572696**
Comments: This Laboratory Grown Diamond was created by Chemical Vapor Deposition (CVD) growth process.
Indications of post-growth treatment.