



**ELECTRONIC COPY**

LG689573223  
Report verification at igi.org



March 12, 2025

IGI Report Number **LG689573223**

Description **LABORATORY GROWN DIAMOND**

Shape and Cutting Style **EMERALD CUT**

Measurements **8.77 X 6.23 X 4.13 MM**

**GRADING RESULTS**

Carat Weight **2.21 CARATS**

Color Grade **D**

Clarity Grade **VS 2**

March 12, 2025  
IGI Report Number **LG689573223**  
Description **LABORATORY GROWN DIAMOND**  
Shape and Cutting Style **EMERALD CUT**  
Measurements **8.77 X 6.23 X 4.13 MM**

**GRADING RESULTS**

Carat Weight **2.21 CARATS**

Color Grade **D**

Clarity Grade **VS 2**

**ADDITIONAL GRADING INFORMATION**

Polish **EXCELLENT**

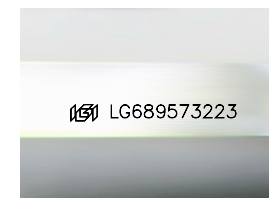
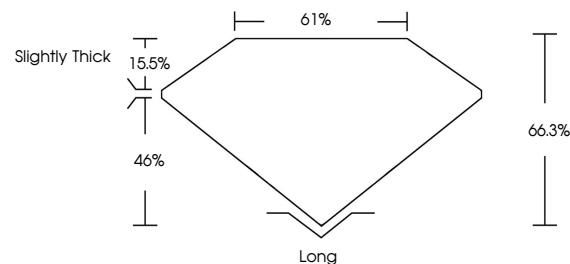
Symmetry **EXCELLENT**

Fluorescence **NONE**

Inscription(s) **LG689573223**

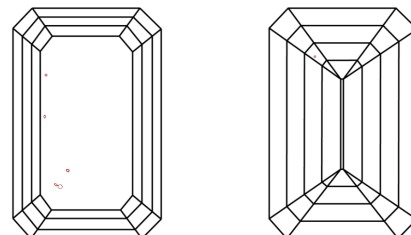
Comments: This Laboratory Grown Diamond was created by Chemical Vapor Deposition (CVD) growth process.  
Type IIa

**PROPORTIONS**



Sample Image Used

**CLARITY CHARACTERISTICS**



**KEY TO SYMBOLS**

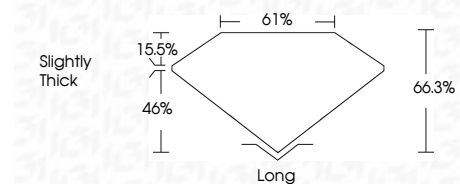
Red symbols indicate internal characteristics.  
Green symbols indicate external characteristics.

**COLOR**

D E F G H I J Faint Very Light Light

**CLARITY**

IF	WS <sup>1-2</sup>	VS <sup>1-2</sup>	SI <sup>1-2</sup>	I <sup>1-3</sup>
Internally Flawless	Very Very Slightly Included	Very Slightly Included	Slightly Included	Included



**ADDITIONAL GRADING INFORMATION**

Polish **EXCELLENT**

Symmetry **EXCELLENT**

Fluorescence **NONE**

Inscription(s) **LG689573223**

Comments: This Laboratory Grown Diamond was created by Chemical Vapor Deposition (CVD) growth process.  
Type IIa



**IGI**



March 12, 2025  
IGI Report No **LG689573223**  
**EMERALD CUT**

**2.21 CARATS**  
Carat Weight  
Color Grade **D**  
Clarity Grade **VS 2**  
Depth **66.3%**  
Table **61%**  
Girdle **Slightly Thick**

Culet **Long**  
Polish **EXCELLENT**  
Symmetry **EXCELLENT**  
Fluorescence **NONE**  
Inscription(s) **LG689573223**

Comments: This Laboratory Grown Diamond was created by Chemical Vapor Deposition (CVD) growth process.  
Type IIa