



INTERNATIONAL GEMOLOGICAL INSTITUTE

ELECTRONIC COPY



March 17, 2025

IGI Report Number LG689576118
ROUND BRILLIANT
LABORATORY GROWN DIAMOND
4.85 - 4.89 X 3.01 MM

Carat Weight 0.44 CARAT
Color Grade D
Clarity Grade SI 1
Cut Grade IDEAL
Polish EXCELLENT
Symmetry EXCELLENT
Fluorescence NONE
Inscription(s) IGI LG689576118

Comments: HEARTS & ARROWS This Laboratory Grown Diamond was created by Chemical Vapor Deposition (CVD) growth process. Type IIa

LABORATORY GROWN DIAMOND REPORT

March 17, 2025
IGI Report Number **LG689576118**
Description **LABORATORY GROWN DIAMOND**
Shape and Cutting Style **ROUND BRILLIANT**
Measurements **4.85 - 4.89 X 3.01 MM**

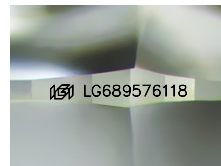
GRADING RESULTS

Carat Weight 0.44 CARAT
Color Grade D
Clarity Grade SI 1
Cut Grade IDEAL

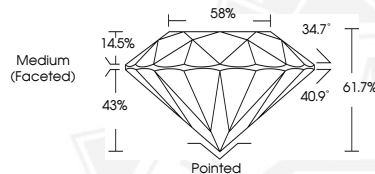
ADDITIONAL GRADING INFORMATION

Polish EXCELLENT
Symmetry EXCELLENT
Fluorescence NONE
Inscription(s) IGI LG689576118

Comments: HEARTS & ARROWS
This Laboratory Grown Diamond was created by Chemical Vapor Deposition (CVD) growth process. Type IIa



Sample Image Used



HEARTS & ARROWS



March 17, 2025

IGI Report Number LG689576118
ROUND BRILLIANT
LABORATORY GROWN DIAMOND
4.85 - 4.89 X 3.01 MM

Carat Weight 0.44 CARAT
Color Grade D
Clarity Grade SI 1
Cut Grade IDEAL
Polish EXCELLENT
Symmetry EXCELLENT
Fluorescence NONE
Inscription(s) IGI LG689576118

Comments: HEARTS & ARROWS This Laboratory Grown Diamond was created by Chemical Vapor Deposition (CVD) growth process. Type IIa



THIS DOCUMENT WAS PRODUCED WITH THE FOLLOWING SECURITY MEASURES: SPECIAL DOCUMENT PAPER, INK SCREENS, WATERMARK, BACKGROUND DESIGNS, HOLOGRAM AND OTHER SECURITY FEATURES NOT LISTED AND DO EXCEED DOCUMENT SECURITY INDUSTRY GUIDELINES.

For terms & conditions and to verify this report, please visit www.igi.org