



ELECTRONIC COPY

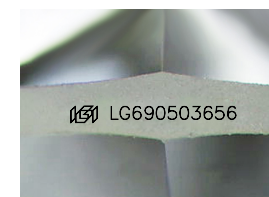
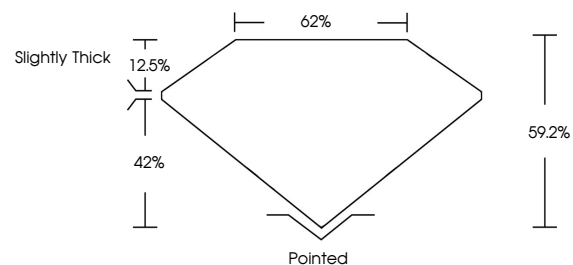
LG690503656
Report verification at igi.org



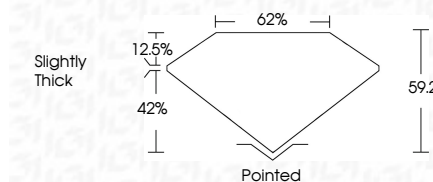
April 15, 2025
IGI Report Number **LG690503656**
Description **LABORATORY GROWN DIAMOND**
Shape and Cutting Style **PEAR MIXED CUT**
Measurements **15.75 X 9.59 X 5.68 MM**
GRADING RESULTS
Carat Weight **5.55 CARATS**
Color Grade **D**
Clarity Grade **VS 1**

April 15, 2025
IGI Report Number **LG690503656**
Description **LABORATORY GROWN DIAMOND**
Shape and Cutting Style **PEAR MIXED CUT**
Measurements **15.75 X 9.59 X 5.68 MM**
GRADING RESULTS
Carat Weight **5.55 CARATS**
Color Grade **D**
Clarity Grade **VS 1**

PROPORTIONS



Sample Image Used



ADDITIONAL GRADING INFORMATION

Polish **EXCELLENT**
Symmetry **GOOD**
Fluorescence **NONE**
Inscription(s) **IGI LG690503656**

Comments: This Laboratory Grown Diamond was created by Chemical Vapor Deposition (CVD) growth process.
Type IIa

ADDITIONAL GRADING INFORMATION

Polish **EXCELLENT**
Symmetry **GOOD**
Fluorescence **NONE**
Inscription(s) **IGI LG690503656**
Comments: This Laboratory Grown Diamond was created by Chemical Vapor Deposition (CVD) growth process.
Type IIa

COLOR

D E F G H I J Faint Very Light Light

CLARITY

IF	VS ¹⁻²	VS ¹⁻²	SI ¹⁻²	I ¹⁻³
Internally Flawless	Very Very Slightly Included	Very Slightly Included	Slightly Included	Included



IGI



April 15, 2025
IGI Report No. **LG690503656**
PEAR MIXED CUT
15.75 X 9.59 X 5.68 MM
5.55 CARATS
D
VS 1
62%
62%
Slightly Thick
Pointed
EXCELLENT
GOOD
NONE
IGI LG690503656

Comments: This Laboratory Grown Diamond was created by Chemical Vapor Deposition (CVD) growth process.
Type IIa