



**INTERNATIONAL  
GEMOLOGICAL  
INSTITUTE**

**LABORATORY GROWN DIAMOND REPORT**

March 10, 2025  
 IGI Report Number **LG690509188**  
 Description **LABORATORY GROWN DIAMOND**  
 Shape and Cutting Style **EMERALD CUT**  
 Measurements **6.56 X 4.72 X 3.24 MM**

**GRADING RESULTS**

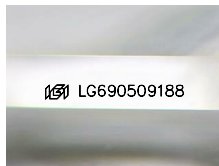
Carat Weight **0.97 CARAT**  
 Color Grade **D**  
 Clarity Grade **VS 2**

**ADDITIONAL GRADING INFORMATION**

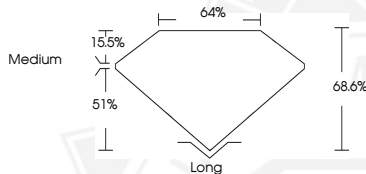
Polish **EXCELLEN**  
 Symmetry **EXCELLEN**  
 Fluorescence **NONE**  
 Inscription(s) **IGI LG690509188**

Comments: This Laboratory Grown Diamond was created by  
 Chemical Vapor Deposition (CVD) growth process.  
 Type IIa

**ELECTRONIC COPY**



Sample Image Used



March 10, 2025  
 IGI Report Number **LG690509188**  
**EMERALD CUT**  
**LABORATORY GROWN DIAMOND**  
**6.56 X 4.72 X 3.24 MM**  
 Carat Weight **0.97 CARAT**  
 Color Grade **D**  
 Clarity Grade **VS 2**  
 Polish **EXCELLEN**  
 Symmetry **EXCELLEN**  
 Fluorescence **NONE**  
 Inscription(s) **IGI LG690509188**

Comments: This Laboratory Grown  
 Diamond was created by  
 Chemical Vapor Deposition (CVD)  
 growth process. Type IIa



March 10, 2025  
 IGI Report Number **LG690509188**  
**EMERALD CUT**  
**LABORATORY GROWN DIAMOND**  
**6.56 X 4.72 X 3.24 MM**  
 Carat Weight **0.97 CARAT**  
 Color Grade **D**  
 Clarity Grade **VS 2**  
 Polish **EXCELLEN**  
 Symmetry **EXCELLEN**  
 Fluorescence **NONE**  
 Inscription(s) **IGI LG690509188**

Comments: This Laboratory Grown  
 Diamond was created by  
 Chemical Vapor Deposition (CVD)  
 growth process. Type IIa

THIS DOCUMENT WAS PRODUCED WITH THE FOLLOWING SECURITY MEASURES: SPECIAL DOCUMENT PAPER, INK SCREENS, WATERMARK, BACKGROUND DESIGN, HOLOGRAM AND OTHER SECURITY FEATURES NOT LISTED AND DO EXCEED DOCUMENT SECURITY INDUSTRY GUIDELINES.

For terms & conditions and to verify this report, please visit [www.igi.org](http://www.igi.org)