



ELECTRONIC COPY

LG690525164
Report verification at igi.org



April 3, 2025

IGI Report Number **LG690525164**

Description **LABORATORY GROWN DIAMOND**

Shape and Cutting Style **HEART BRILLIANT**

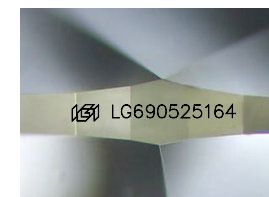
Measurements **11.62 X 13.32 X 7.82 MM**

GRADING RESULTS

Carat Weight **7.13 CARATS**

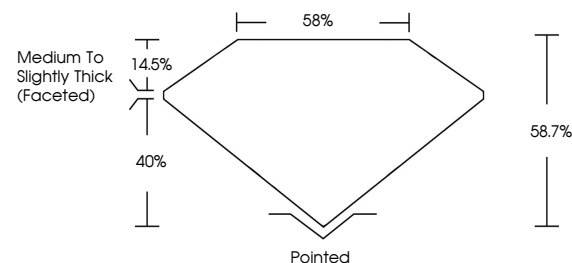
Color Grade **D**

Clarity Grade **VS 1**

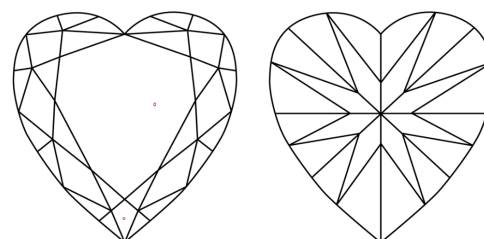


Sample Image Used

PROPORTIONS



CLARITY CHARACTERISTICS



KEY TO SYMBOLS

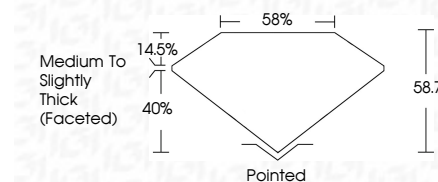
Red symbols indicate internal characteristics.
Green symbols indicate external characteristics.

COLOR

D E F G H I J Faint Very Light Light

CLARITY

IF	VS ¹⁻²	VS ¹⁻²	SI ¹⁻²	I ¹⁻³
Internally Flawless	Very Very Slightly Included	Very Slightly Included	Slightly Included	Included



ADDITIONAL GRADING INFORMATION

Polish **EXCELLENT**

Symmetry **EXCELLENT**

Fluorescence **NONE**

Inscription(s) **IGI LG690525164**

Comments: This Laboratory Grown Diamond was created by Chemical Vapor Deposition (CVD) growth process. Type IIa



IGI



April 3, 2025
IGI Report No LG690525164
HEART BRILLIANT
11.62 X 13.32 X 7.82 MM
7.13 CARATS
D
VS 1
58.7%
40%
Medium to Slightly Thick (Faceted)
Pointed
EXCELLENT
EXCELLENT
NONE
IGI LG690525164
Comments: This Laboratory Grown Diamond was created by Chemical Vapor Deposition (CVD) growth process. Type IIa