

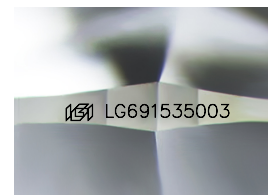
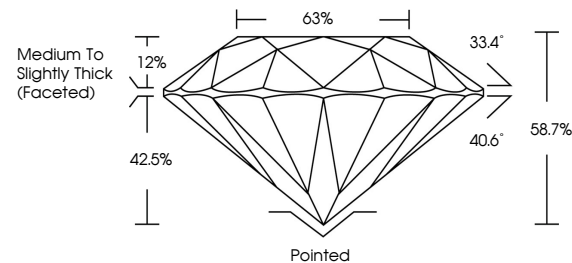


ELECTRONIC COPY

LABORATORY GROWN DIAMOND REPORT

LG691535003
Report verification at igi.org

PROPORTIONS



Sample Image Used

COLOR

D E F G H I J Faint Very Light Light

CLARITY

IF	VVS ¹⁻²	VS ¹⁻²	SI ¹⁻²	I ¹⁻³
Internally Flawless	Very Very Slightly Included	Very Slightly Included	Slightly Included	Included



© IGI 2020, International Gemological Institute

FD - 10 20

www.igi.org

LABORATORY GROWN DIAMOND REPORT



March 20, 2025

IGI Report Number **LG691535003**

Description **LABORATORY GROWN DIAMOND**Shape and Cutting Style **ROUND BRILLIANT**

Measurements 6.57 - 6.61 X 3.86 MM

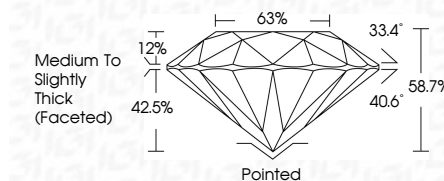
GRADING RESULTS

Carat Weight **1.03 CARAT**

Color Grade F

Clarity Grade SI 2

Cut Grade **EXCELLENT**



ADDITIONAL GRADING INFORMATION

Polish VERY GOOD

Symmetry VERY GOODFluorescence NONEInscription(s) LG691535003

Comments: This Laboratory Grown Diamond was created by Chemical Vapor Deposition (CVD) growth process.
Type IIa



March 20, 2025	Carat Weight	1.03 CARAT
GI Report No (G99) 1535003	Color Grade	F
ROUND BRILLIANT	Clarity Grade	SI 2
	Depth	EXCELLENT
	Table	58.7%
	Girdle	Medium to Slightly Thick (Average)
	Culet	Pointed
	Polish	VERY GOOD
	Symmetry	VERY GOOD
	Fluorescence	NONE
	Inscriptions(s)	G99) LG991535003
	Comments:	The Laboratory Grown Diamond was created by Chemical Vapor Deposition (CVD) growth process.
	Type IIA	