



ELECTRONIC COPY

LG691572841
Report verification at igi.org



March 29, 2025
IGI Report Number **LG691572841**
Description **LABORATORY GROWN DIAMOND**
Shape and Cutting Style **CUT CORNERED SQUARE
MODIFIED BRILLIANT**
Measurements **8.55 X 8.22 X 5.48 MM**
GRADING RESULTS
Carat Weight **3.42 CARATS**
Color Grade **FANCY DEEP GREEN**
Clarity Grade **VVS 2**

LABORATORY GROWN DIAMOND REPORT

March 29, 2025
IGI Report Number **LG691572841**
Description **LABORATORY GROWN DIAMOND**
Shape and Cutting Style **CUT CORNERED SQUARE
MODIFIED BRILLIANT**
Measurements **8.55 X 8.22 X 5.48 MM**

GRADING RESULTS

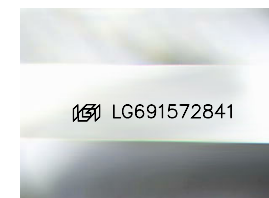
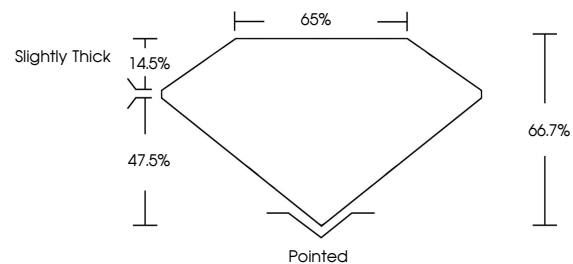
Carat Weight **3.42 CARATS**
Color Grade **FANCY DEEP GREEN**
Clarity Grade **VVS 2**

ADDITIONAL GRADING INFORMATION

Polish **EXCELLENT**
Symmetry **EXCELLENT**
Fluorescence **VERY SLIGHT**
Inscription(s) **IGI LG691572841**

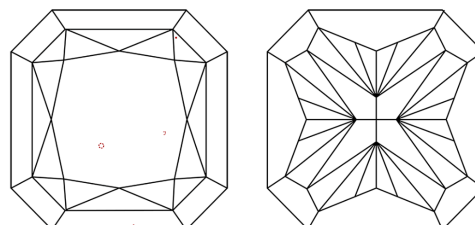
Comments: This Laboratory Grown Diamond was created by Chemical Vapor Deposition (CVD) growth process. Indications of post-growth treatment.

PROPORTIONS



Sample Image Used

CLARITY CHARACTERISTICS



KEY TO SYMBOLS

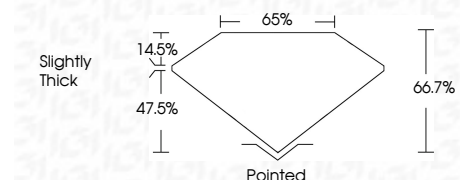
Red symbols indicate internal characteristics.
Green symbols indicate external characteristics.

COLOR

D E F G H I J Faint Very Light Light

CLARITY

IF	VS ¹⁻²	VS ¹⁻²	SI ¹⁻²	I ¹⁻³
Internally Flawless	Very Very Slightly Included	Very Slightly Included	Slightly Included	Included



ADDITIONAL GRADING INFORMATION

Polish **EXCELLENT**
Symmetry **EXCELLENT**
Fluorescence **VERY SLIGHT**
Inscription(s) **IGI LG691572841**
Comments: This Laboratory Grown Diamond was created by Chemical Vapor Deposition (CVD) growth process. Indications of post-growth treatment.



March 29, 2025
IGI Report No LG691572841
CUT CORNERED SQUARE MODIFIED BRILLIANT
8.55 X 8.22 X 5.48 MM
3.42 CARATS
FANCY DEEP GREEN
VVS 2
66.7%
65%
Slightly Thick
Pointed
EXCELLENT
EXCELLENT
VERY SLIGHT
IGI LG691572841
Comments: This Laboratory Grown Diamond was created by Chemical Vapor Deposition (CVD) growth process. Indications of post-growth treatment.