



**ELECTRONIC COPY**

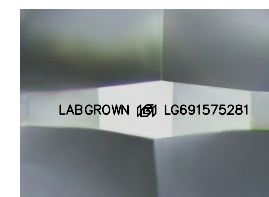
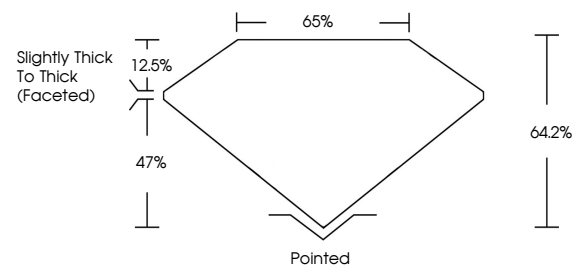
LG691575281  
Report verification at [igi.org](http://igi.org)



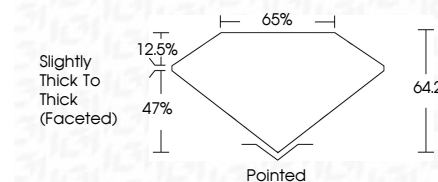
March 18, 2025  
IGI Report Number **LG691575281**  
Description **LABORATORY GROWN DIAMOND**  
Shape and Cutting Style **CUSHION BRILLIANT**  
Measurements **16.16 X 11.50 X 7.38 MM**  
**GRADING RESULTS**  
Carat Weight **11.03 CARATS**  
Color Grade **F**  
Clarity Grade **VVS 2**

March 18, 2025  
IGI Report Number **LG691575281**  
Description **LABORATORY GROWN DIAMOND**  
Shape and Cutting Style **CUSHION BRILLIANT**  
Measurements **16.16 X 11.50 X 7.38 MM**  
**GRADING RESULTS**  
Carat Weight **11.03 CARATS**  
Color Grade **F**  
Clarity Grade **VVS 2**

**PROPORTIONS**



Sample Image Used



**ADDITIONAL GRADING INFORMATION**

Polish **EXCELLENT**  
Symmetry **EXCELLENT**  
Fluorescence **NONE**  
Inscription(s) **LABGROWN (IGI) LG691575281**

Comments: This Laboratory Grown Diamond was created by Chemical Vapor Deposition (CVD) growth process.  
Type IIa

**ADDITIONAL GRADING INFORMATION**

Polish **EXCELLENT**  
Symmetry **EXCELLENT**  
Fluorescence **NONE**  
Inscription(s) **LABGROWN (IGI) LG691575281**  
Comments: This Laboratory Grown Diamond was created by Chemical Vapor Deposition (CVD) growth process.  
Type IIa

**COLOR**

D E F G H I J Faint Very Light Light

**CLARITY**

IF	VS <sup>1-2</sup>	VS <sup>1-2</sup>	SI <sup>1-2</sup>	I <sup>1-3</sup>
Internally Flawless	Very Very Slightly Included	Very Slightly Included	Slightly Included	Included



**IGI**



March 18, 2025  
IGI Report No **LG691575281**  
**CUSHION BRILLIANT**  
16.16 X 11.50 X 7.38 MM  
Carat Weight **11.03 CARATS**  
Color Grade **F**  
Clarity Grade **VVS 2**  
Depth **64.2%**  
Table **65%**  
Girdle **Slightly Thick To Thick (Faceted)**  
Culet **Pointed**  
Polish **EXCELLENT**  
Symmetry **EXCELLENT**  
Fluorescence **NONE**  
Inscription(s) **LABGROWN (IGI) LG691575281**  
Comments: This Laboratory Grown Diamond was created by Chemical Vapor Deposition (CVD) growth process.  
Type IIa